

TDM Parking Management Project Discussion

January, 2018



Background

1. **2045 LRTP analysis identified the need for about 9,000 additional spaces regionwide**
2. **Commuter Skills study found about 48,000 commuters/day travel between GWRC and NOVA/DC in 2016. Figure is expected to increase by 51% by 2045 to about 72,000 commuters/day.**
3. **Several successful PNR lots are at or near capacity today**
 - **Garrisonville Lots for Staffordboro and Mine Rd**
 - **Leeland VRE Station**
 - **Fredericksburg VRE Station**
4. **PNR lot improvements are often costly**
 - **Smart Scale cost averaging over \$20,000/space for surface parking**
 - **Limited lower cost opportunities to expand capacity**
 - **Structured parking options are costly**

Potential TDM Parking Management Project for Smart Scale Consideration

Project Scope:

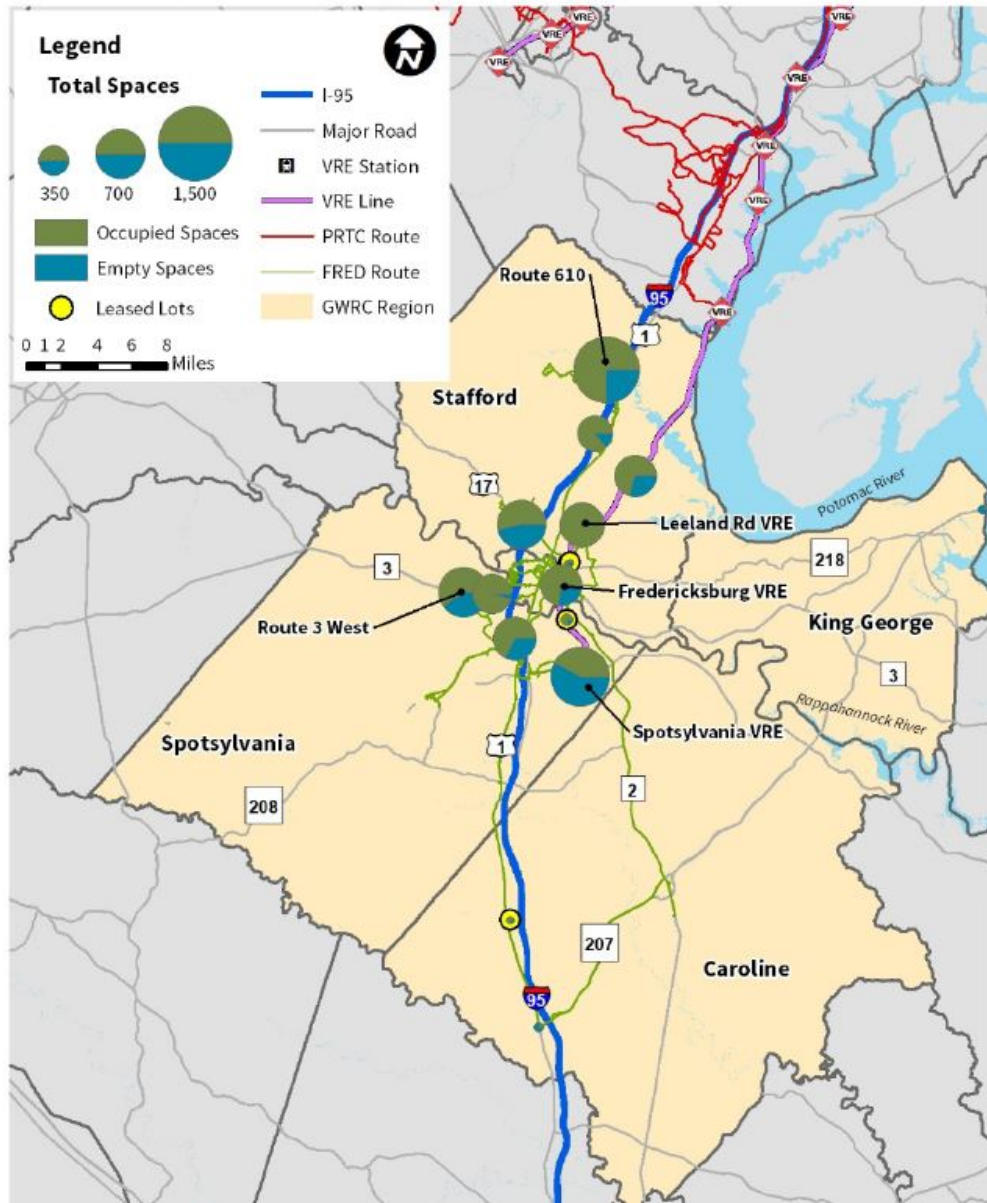
Develop a Smart phone application and data collection devices to provide real time PNR lot availability information to the public for all FAMPO PNR lots

Project Benefits

1. More efficient use of scarce PNR lot capacity
2. More efficient PNR lot commuting, e.g., minimizing users going to lots that are full
3. Reduce need for additional PNR lot spaces
4. Potential synergies with other Smart Scale candidate projects

Existing FAMPO Commuter Lots

Figure 2: Park and Ride Lot Size and Utilization



About 12 including leased areas

8 Non-VRE Lot Areas

- 5 in Stafford
- 3 in Spotsylvania

4 VRE Lots

Several lots at or near capacity

More spaces available in south vs. north

Committed PNR lot improvements are not enough to meet future need

- Rte 630 Lot expansion
- New Commonwealth Drive Lot

Questions & Input?

2045 Long Range Transportation Plan

