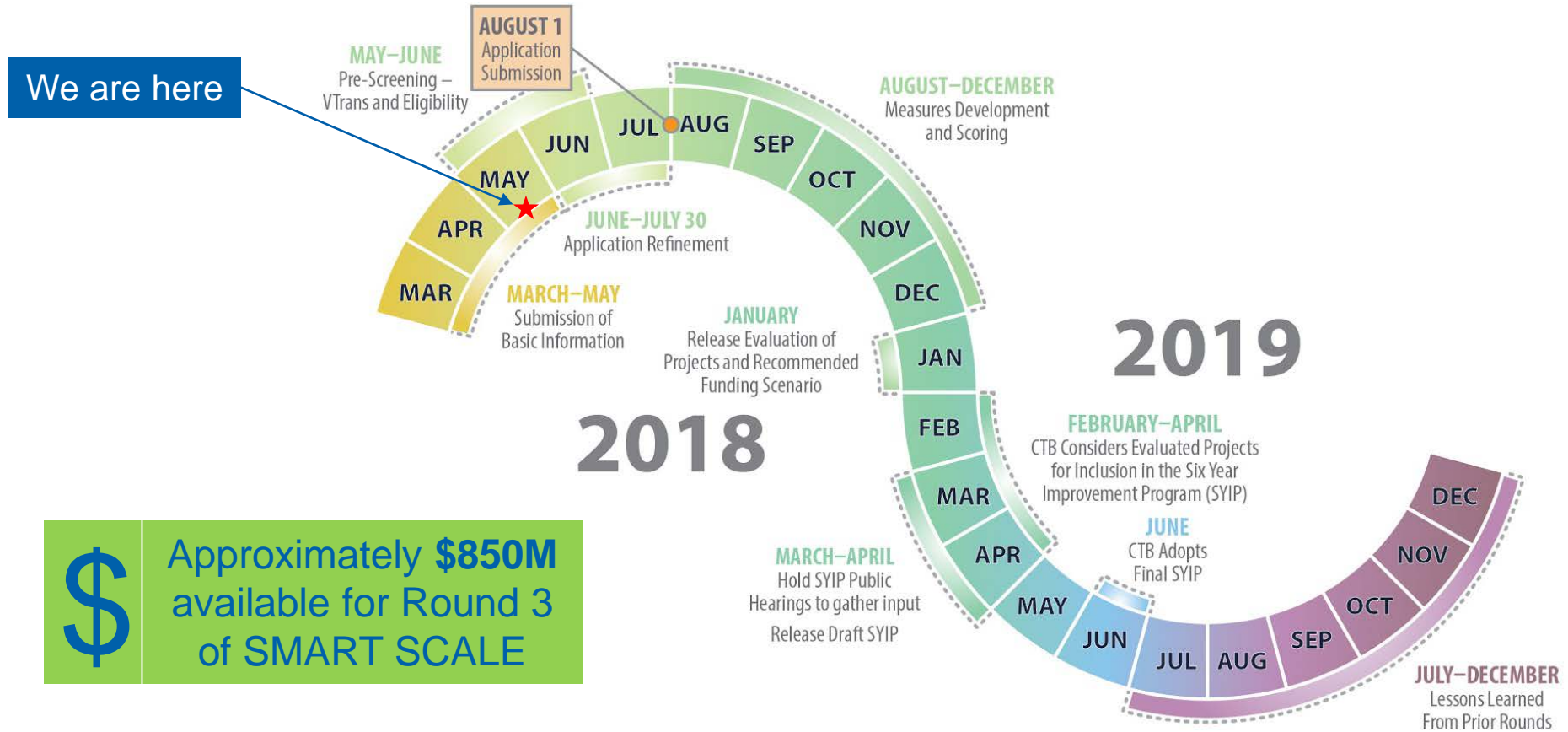


Smart Scale Update

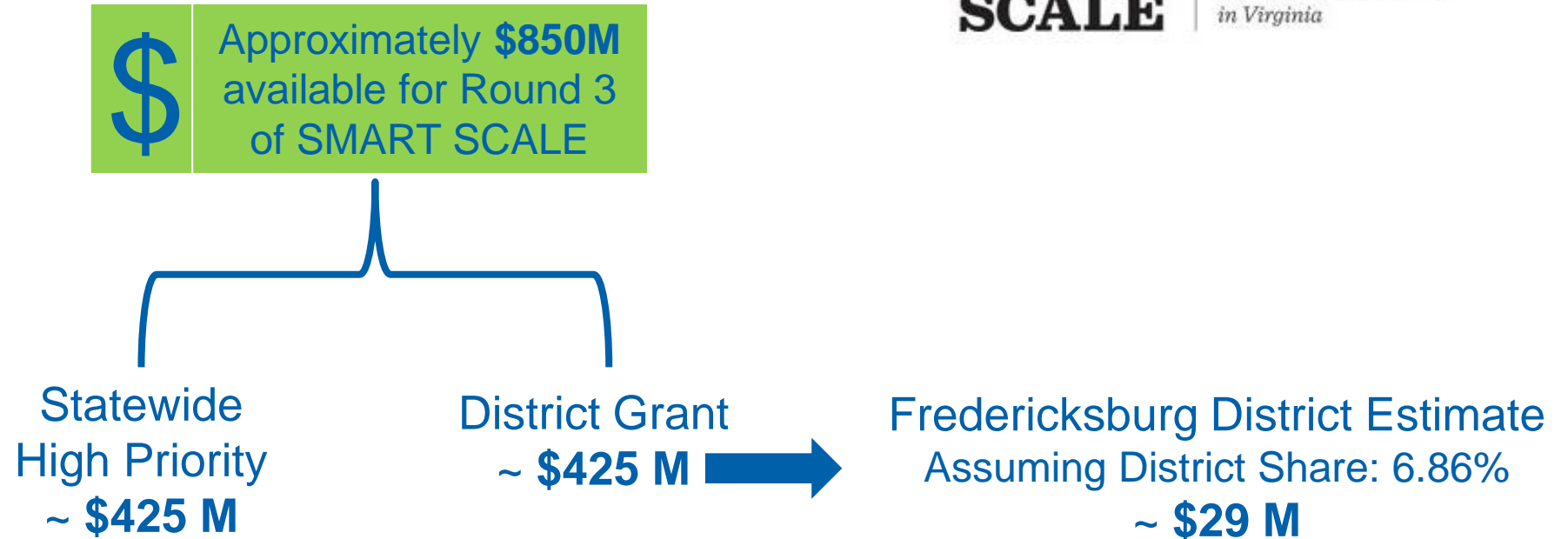
May 21, 2018



SMART SCALE - Round 3 Schedule



Limited Transportation Funding Available



For Smart Scale Round 2: About \$9 Billion in project funding requests competed for about \$1 Billion in available funding.

Strategy Given Limited Funding



1. Consider ways to strengthen project applications

- **Maximize multimodal project components**
- **Reduce project request cost**
 - Maximize leveraged funding
 - Reduce costs

2. For larger projects, consider ways to break into smaller parts or phases

- **Example: Instead of a \$20 Million project, consider submitting two smaller components that cost \$7 Million.**

3. Recognize that only about \$29 M is available in the District Grant

- **Based on Round 1 & 2, smaller projects have been the more successful**
 - Round 1: \$43 M for 8 DG projects selected in GWRC
 - Round 2: \$21 M for 5 DG projects selected in GWRC
- **Average project request cost: \$4.9 M for Round 1 & 2**

Two Smart Scale Deadlines

1. June 1st – Pre-application (initial info.)

- No pre-application limit
- Potential ability to submit multiple variations of a particular project
- No obligation to submit pre-applications for final application consideration

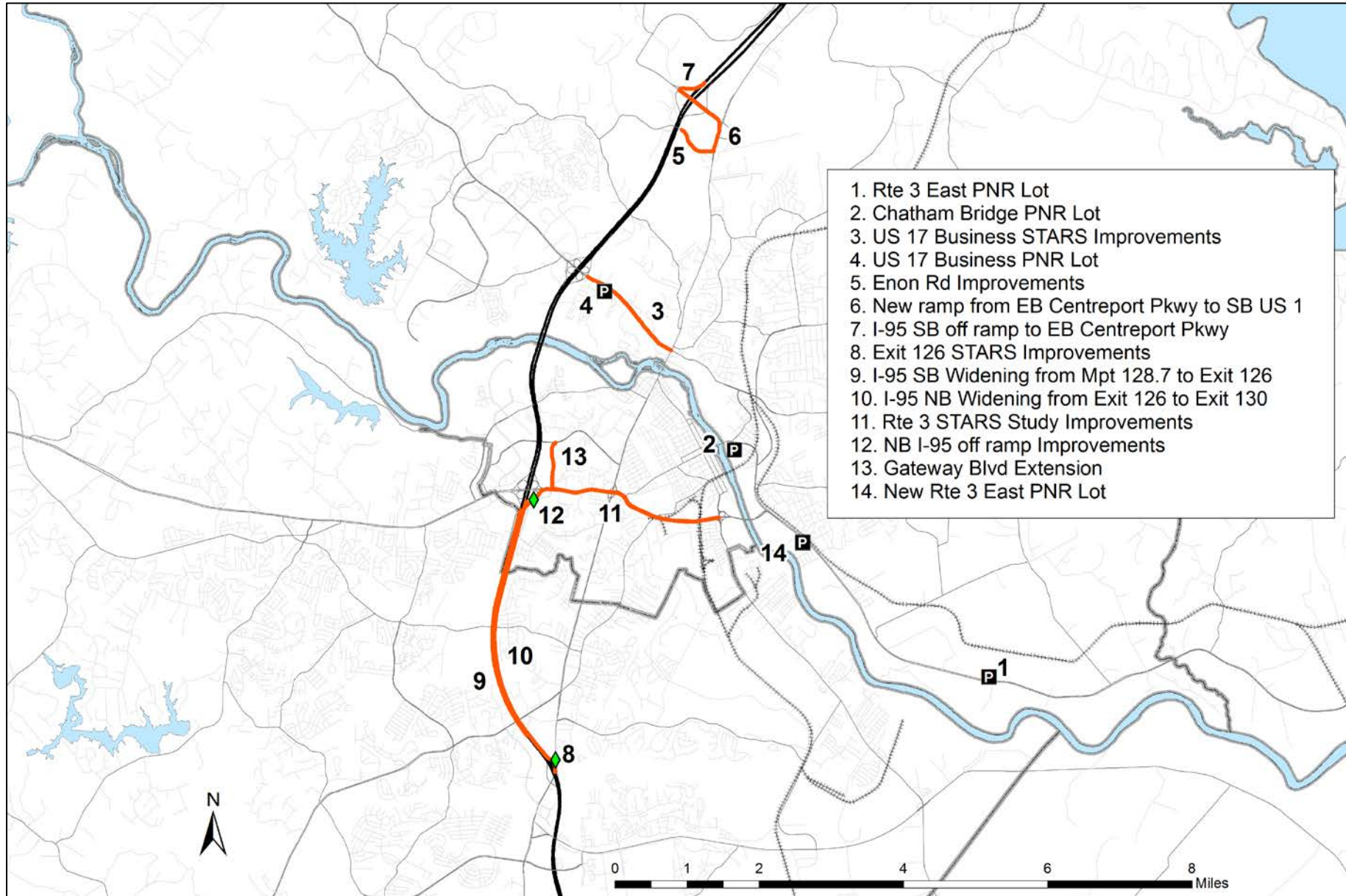
2. August 1st – Final application

- Eight total available application slots for FAMPO/GWRC
 - FAMPO: 4
 - GWRC: 4

Draft Regional Candidate Projects

ID	PRIMARY IMPROVEMENT	TYPE	COST ESTIMATE
A	I-95 SB widening to 4 lanes from Mpt 128.7 to Exit 126, and 5th auxiliary off ramp lane at Exit 126	Highway	\$25 million
B	Exit 126 STARS Study improvements	Highway	\$20 million
C	I-95 SB widening to 4 lanes from Mpt 128.7 to Exit 126, I-95 NB widening to 4 lanes from Exit 126 to Exit 130, and Exit 126 STARS Study improvements	Highway	\$70 million
D	US 17 Bus. STARS Study improvements and new PNR lot	TDM	TBD
E	Exit 136 ramp improvements and Enon Rd intersection improvements	Highway	\$23 million
F	Route 3 STARS Study improvements and I-95 NB to Rte 3 EB ramp improvement	Highway	\$6-12 million
G	Route 3 STARS Study improvements, I-95 NB to Rte 3 EB ramp improvement, and Gateway Blvd extension from Rte 3 to Cowan Blvd	Highway	\$30-36 million
H	SE Stafford County PNR lot improvements	TDM	TBD

Map of Regional Candidate Projects



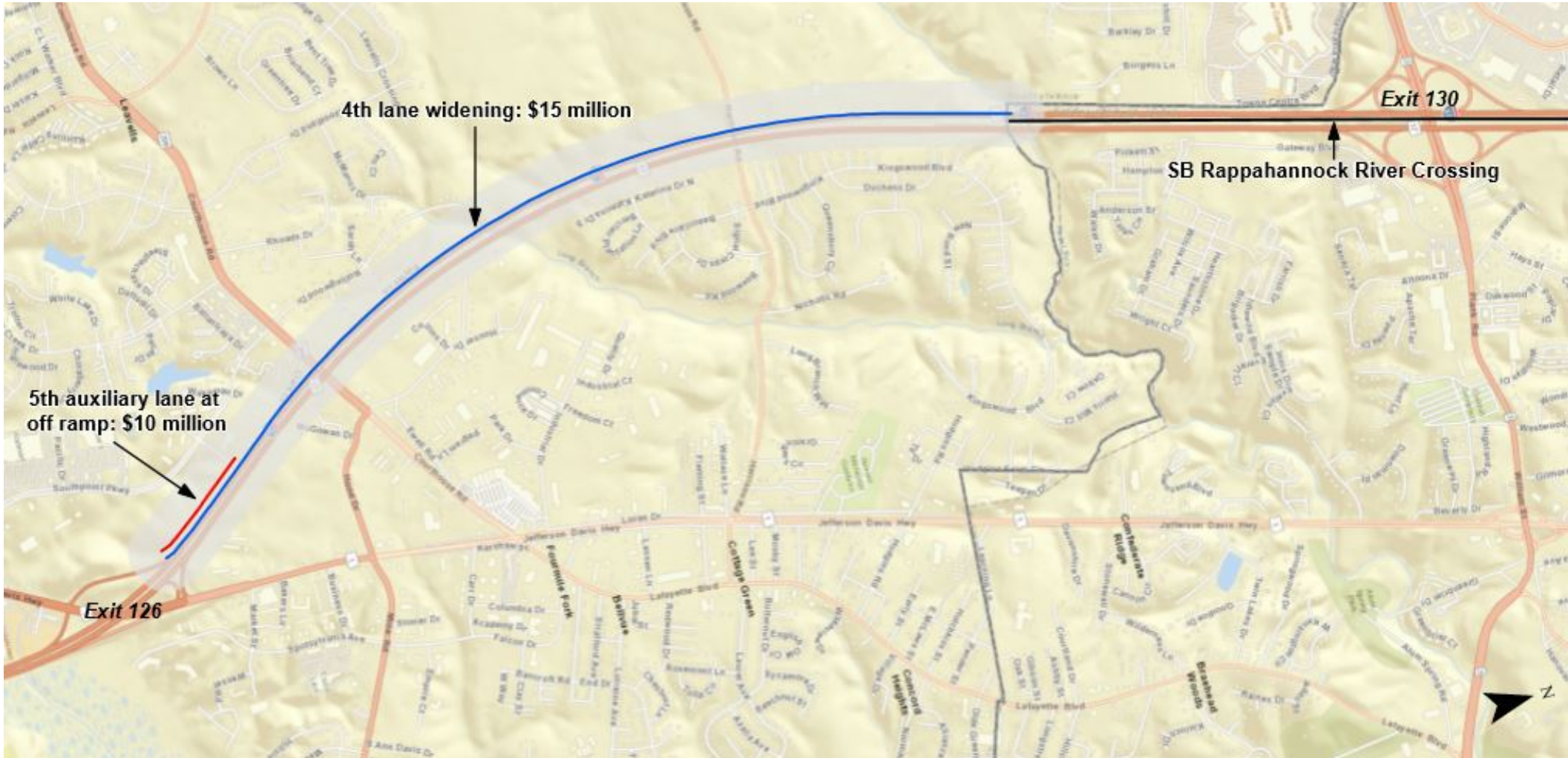
I-95 SB Widening from Mpt 128.7 to Exit 126

Study Support:

I-95 Phase 2

Cost: \$25 million
(no leverage)

Need: By 2030

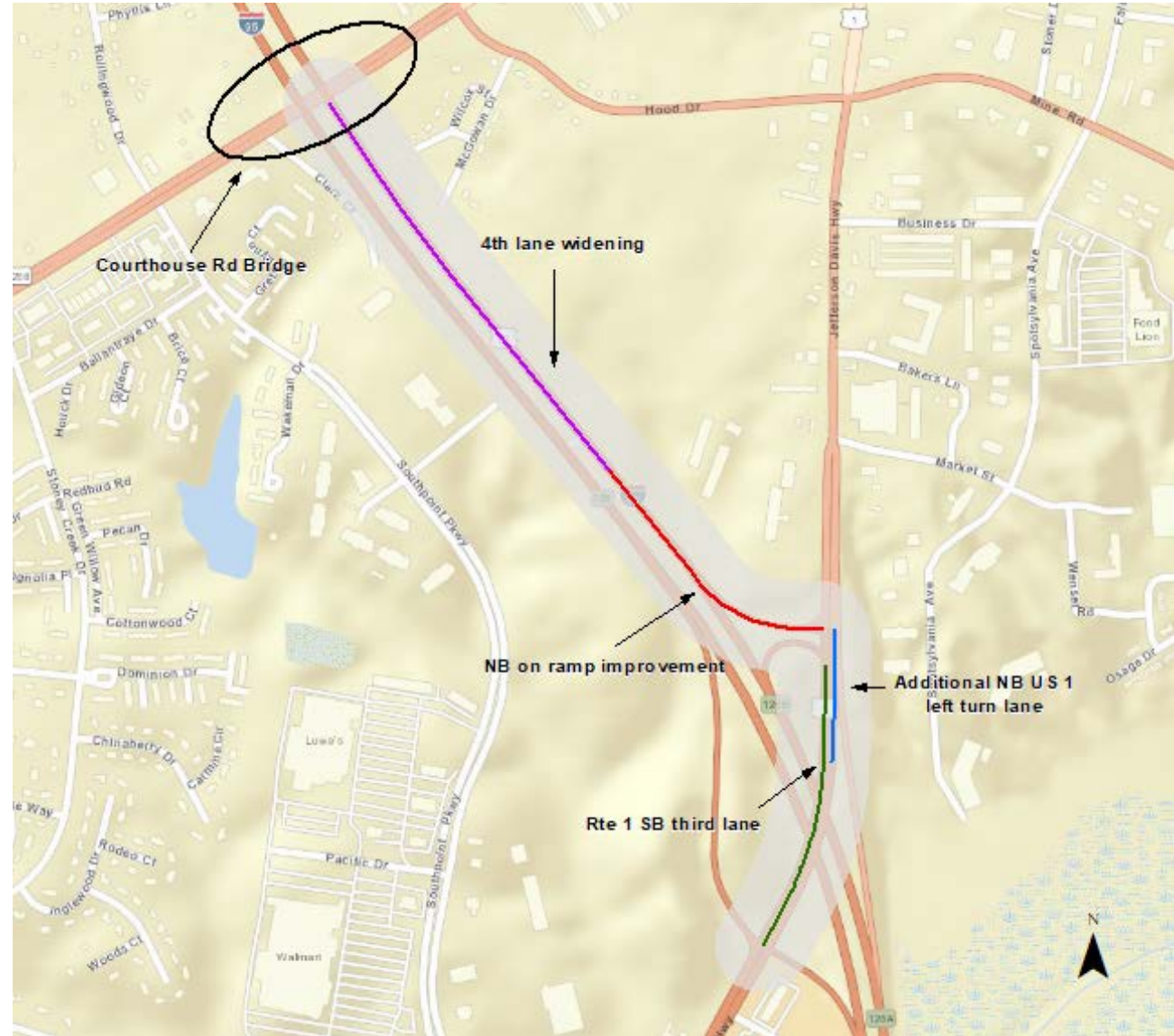


Exit 126 Interchange Improvements

Study Support: Exit 126 STARS and I-95 Phase 2

Estimated Cost: \$20 million (no leverage)

Need: By 2030



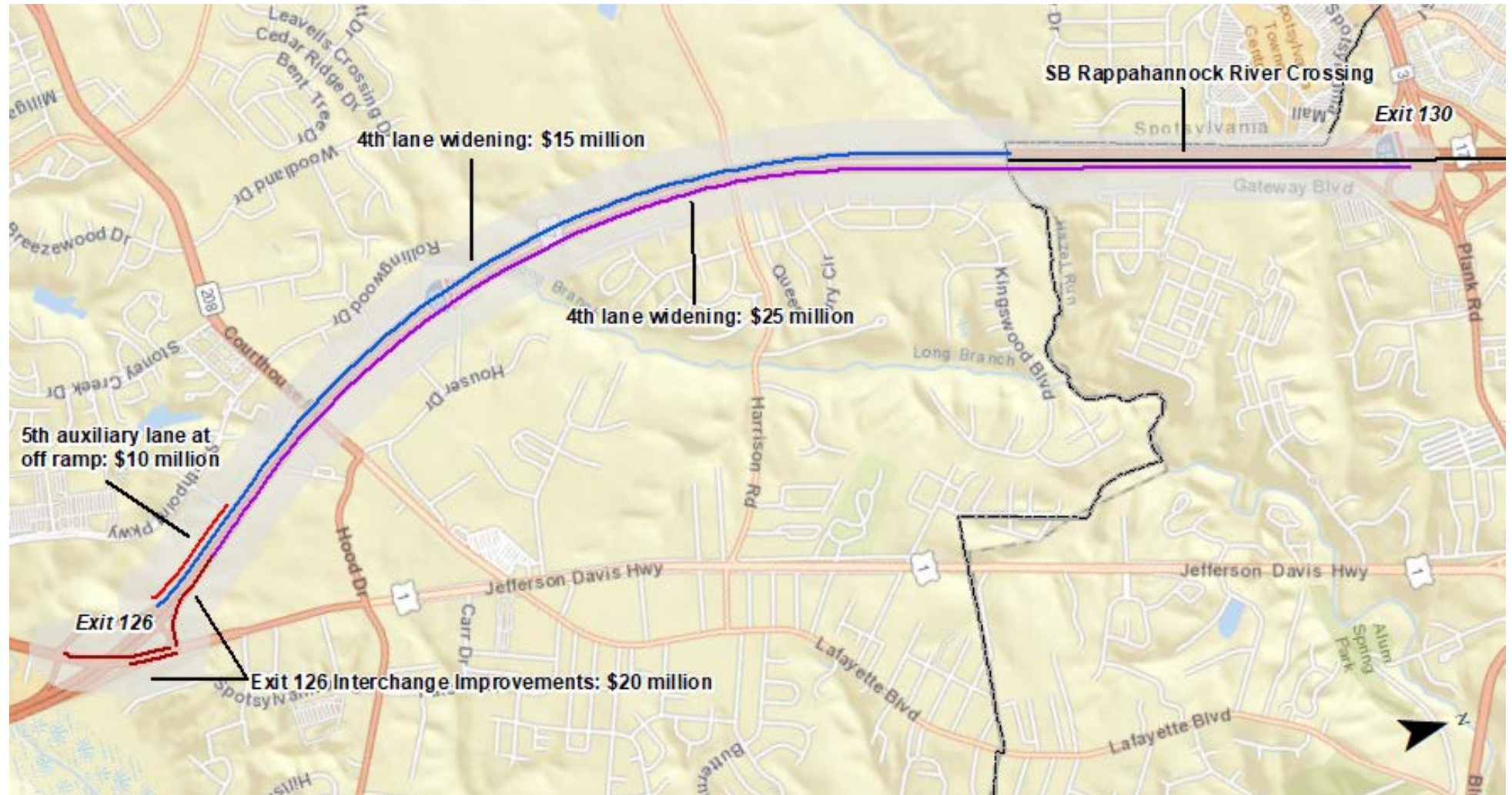
Widen I-95 to 8 Lanes from Exit 130 to Exit 126 + Exit 126 STARS Study Improvements

Study Support:

Exit 126 STARS
and I-95 Phase 2

Cost: \$70 million
(no leverage)

Need: By 2030



US 17 Business STARS Improvements & PNR Lot

Study Support: US 17 Business STARS and I-95 Phase 2

Estimated Cost: \$3 million for Highway Improvements
PNR lot cost still under development (no leverage)

Need: By 2030

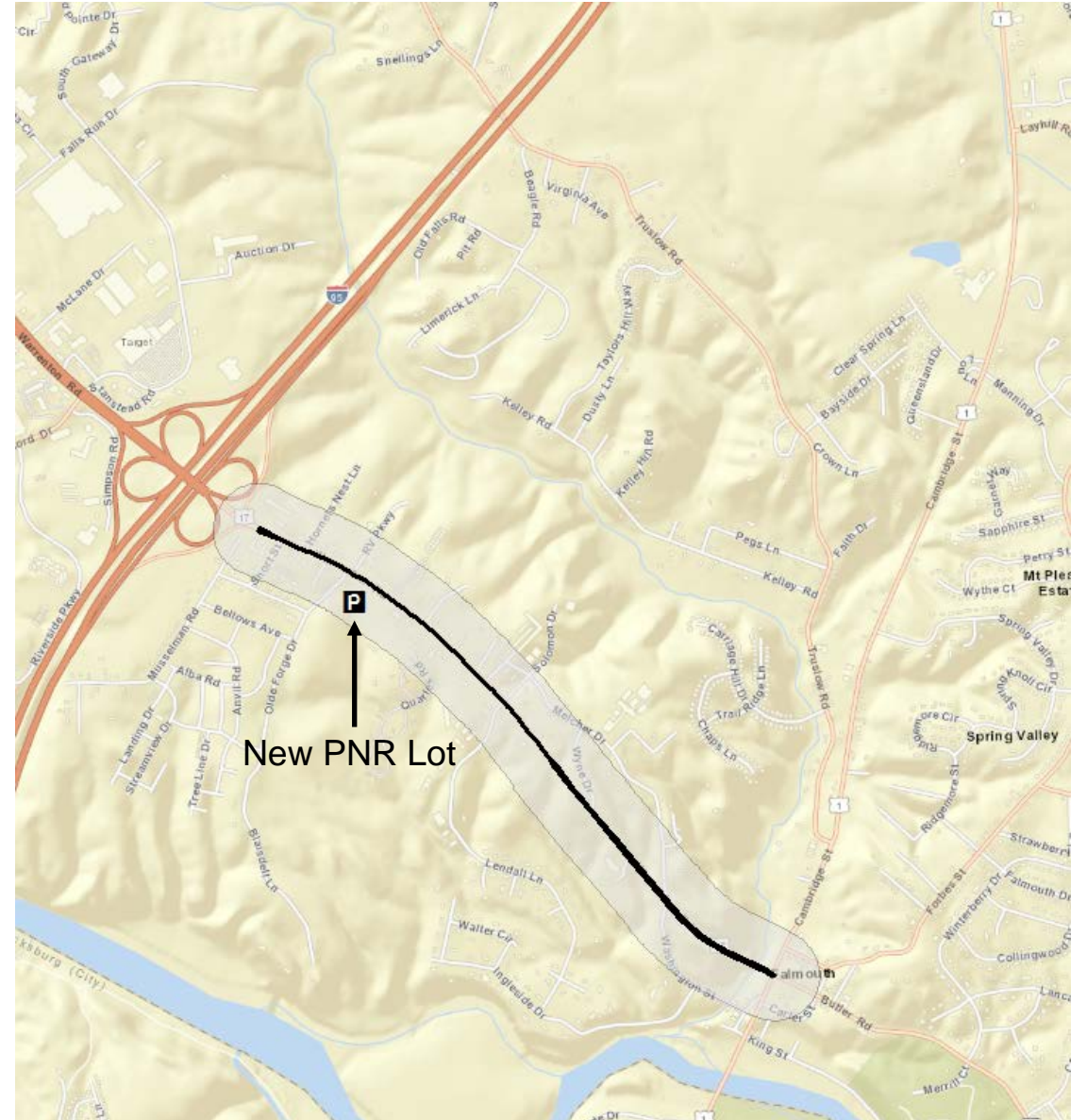
Possible Components:

1. ITS

- Parking Demand Management
- Signal Coordination

2. PNR Projects

- US 17 Bus. – New lot
- Other potential lots in the SE Stafford



Exit 136 Interchange + Enon Rd Improvements

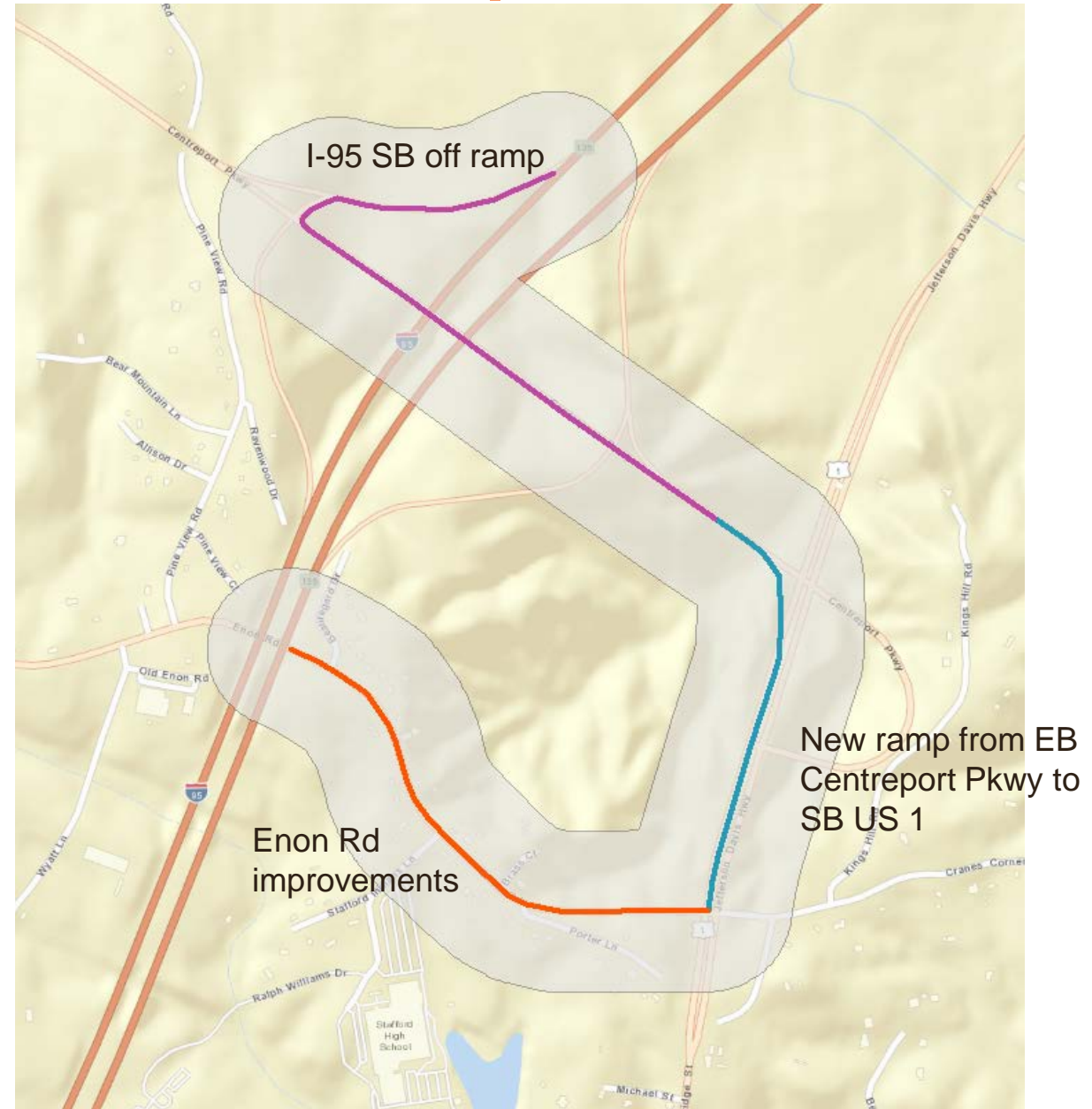
Study Support: I-95 Phase 2

Estimated Cost: \$23 Million

- \$12 Million I-95 off ramp/Centreport Pkwy/US 1
- \$11 Million for Enon Rd

Need: By 2030

Leveraged Funding: \$6 million



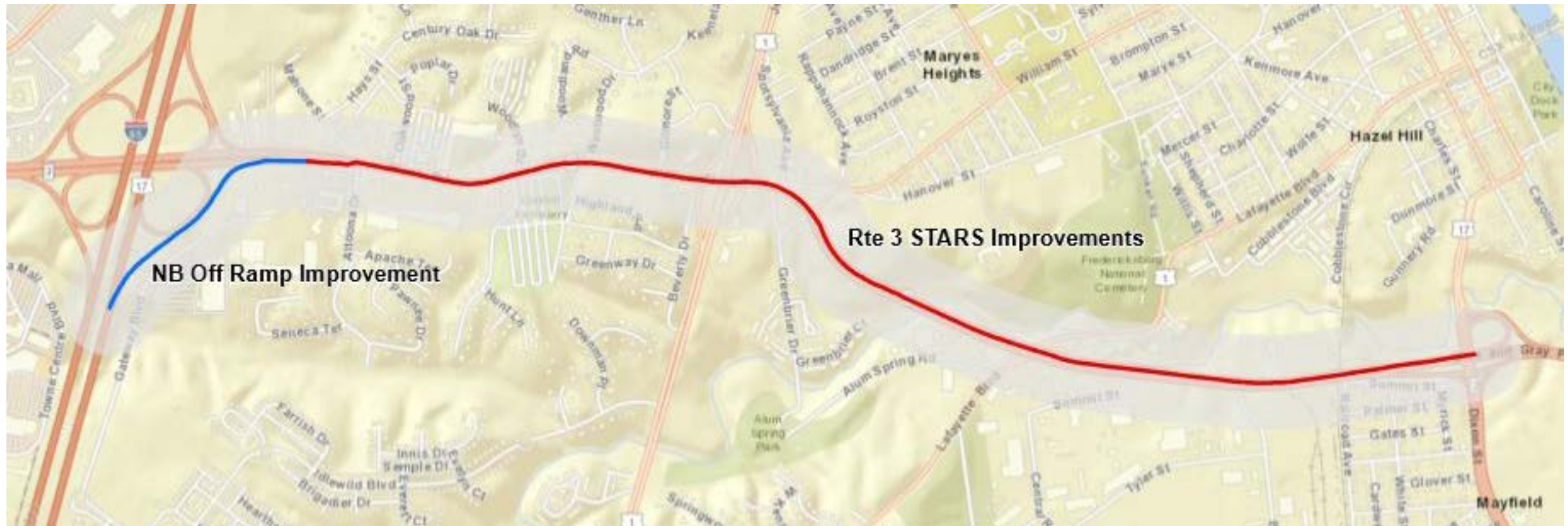
Route 3 STARS Study and NB I-95 Off Ramp Improvement

Study Support: Rte 3 STARS

Estimated Cost: \$6-12 million

Need: By 2030

Leveraged Funding: \$1 million



Route 3 STARS Study + Gateway Blvd Extended

Study Support: Rte 3 STARS

Estimated Cost: \$30-36 million

- Just improvements needed for Gateway Blvd Extension: \$27.3 million (Blue & Green on map)

Need: By 2030

Leveraged Funding: \$11.5 million

Possible Components:

- Signal coordination
- Transit
- PNR lot



SE Stafford Potential New PNR Lots

Need for a permanent lot in this area.
~\$30k/year in FAMPO CMAQ being used by GWRC to lease 105 spaces, but FHWA has indicated leasing can only be temporary.

1. Route 3 East: Washington Square (150 spaces)

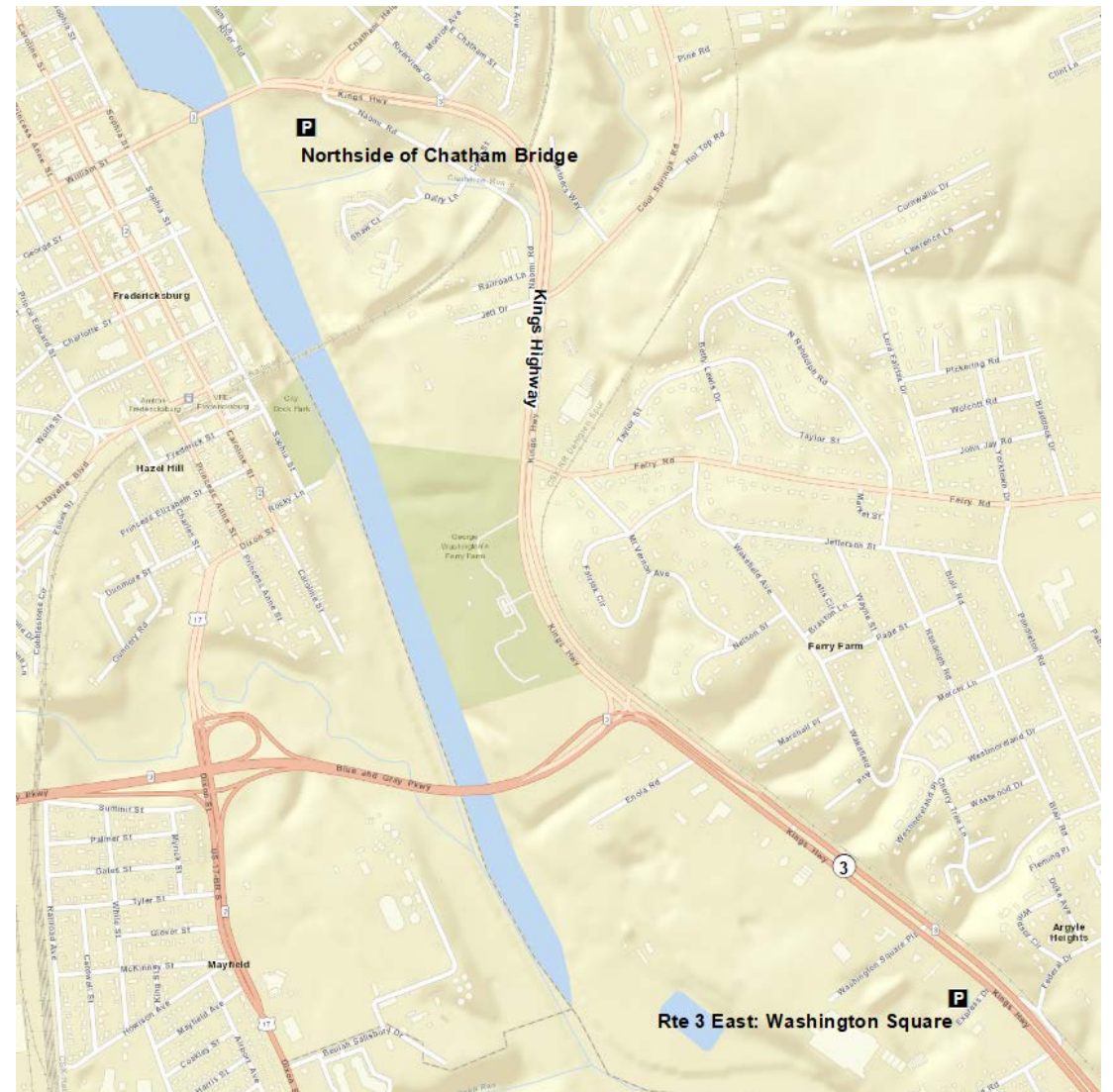
- ~\$18k/year in CMAQ being used to lease spaces in this vicinity

2. Northside of Chatham Bridge (20-100 spaces)

- ~\$12k/year in CMAQ being used to lease spaces in this vicinity

3. Other sites still being considered:

- Rte 3 East (Old Renaissance Faire site)



Additional Multimodal Enhancements being considered for Several Projects

1. Intelligent Transportation System (ITS)

- Parking demand management system
- Traffic operations and security cameras

2. Bike/Ped

- Improvements to existing PNR lot amenities
- Shared use path and sidewalk improvements

2. TDM

- PNR lot improvements
- Marketing of TDM/transit

3. Transit

- Station/Stop improvements

FAMPO Regional Smart Scale Candidate Projects for Statewide High Priority Consideration

1. I-95 SB Widening to 4 lanes from Mpt 128.7 to Exit 126 & offramp improvement at Exit 126
2. Exit 126 STARS Study improvements
3. I-95 Improvements: Exit 130 to Exit 126
 - 4th Lane SB
 - Exit 126 STARS
 - 4th Lane NB
4. Exit 136 ramp and Enon Rd intersection improvements

GWRC Regional Smart Scale Candidate Projects for Statewide High Priority Consideration

1. US 17 Bus. STARS Study improvements & Rte 17 East PNR Lot
2. Rte 3 STARS Study & Rte 3 EB ramp improvements
3. Rte 3 STARS Study & Rte 3 EB ramp improvements & Gateway Blvd extended
4. SE Stafford County new PNR lots

Schedule/Next Steps

Submit initial regional project applications by June 1st deadline

June/July – FAMPO/GWRC Smart Scale updates and action on project changes (if necessary)

Submit final regional project applications by August 1st deadline

Questions?

