

2045 Long Range Transportation Plan Update

October, 2017



Agenda

1. New Map-21/FAST Act Requirements
2. December Meeting
3. I-95 Phase 2
4. Schedule

New Map-21/FAST Act Performance Measure Requirements

New Federal Requirements for MPOs

1. New Federal Code: 23 CFR Part 490
2. State DOT: 1 year from effective date of final Rule
3. MPOs:
 - 180 days after the State DOT for MPO target approval
 - CLRP/TIP Compliance by 5/27/18 for Safety, Transit Asset Management, and some other measures
 - CLRP/TIP Compliance by 5/20/18 for PM-2 & PM-3 measures

Seven performance measures areas

1. Safety
2. Infrastructure Condition
3. Congestion Reduction
4. System Reliability
5. Freight Movement and Economic Vitality
6. Environmental Sustainability
7. Reduced Project Delivery Delays

Working towards MPO Action on Safety (#1), Transit Asset Management (part of #2), and some other Map-21/FAST Act CLRP requirements/recommendations for MPO action in December, 2017. Other Map-21/FAST Act CLRP requirements to be addressed in planned FY-2019 LRTP update.

December Meetings

FAMPO Technical Committee: 12/11 – 11 AM to Noon

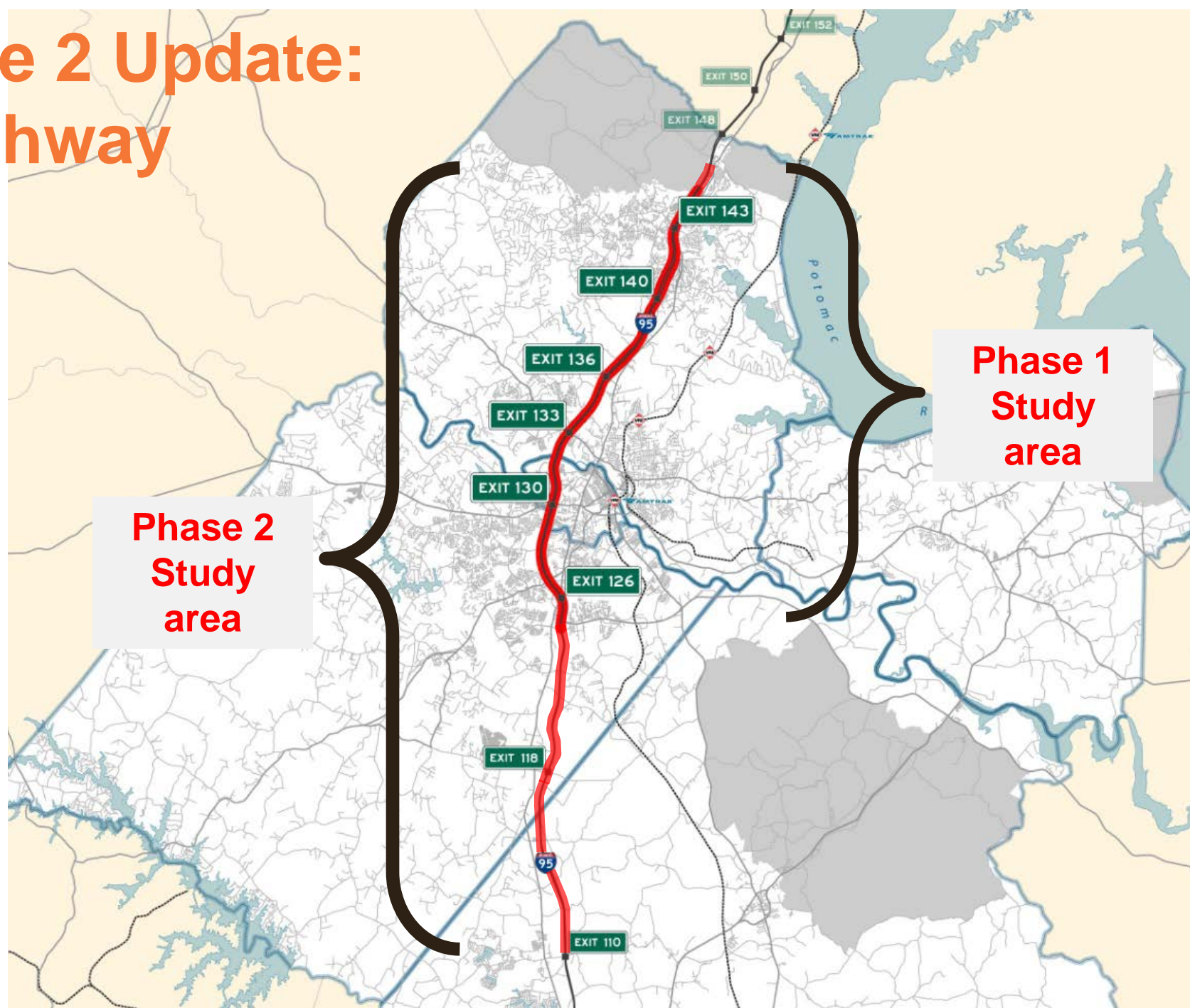
LRTP AC Committee Meeting: 12/11 – 12:30 PM to 3 PM with lunch served at Noon

FAMPO Policy Committee: 12/18 at 6 PM

Reason for special meetings:

1. Approve Map-21/FAST Act performance measures for CLRP
2. Possible action needed on FAST Act Freight Corridors (New)

I-95 Phase 2 Update: Highway



**Phase 2
Study
area**

**Phase 1
Study
area**

Initial VISSIM Modeling Results: Weekday I-95 Mainline Generally Ok

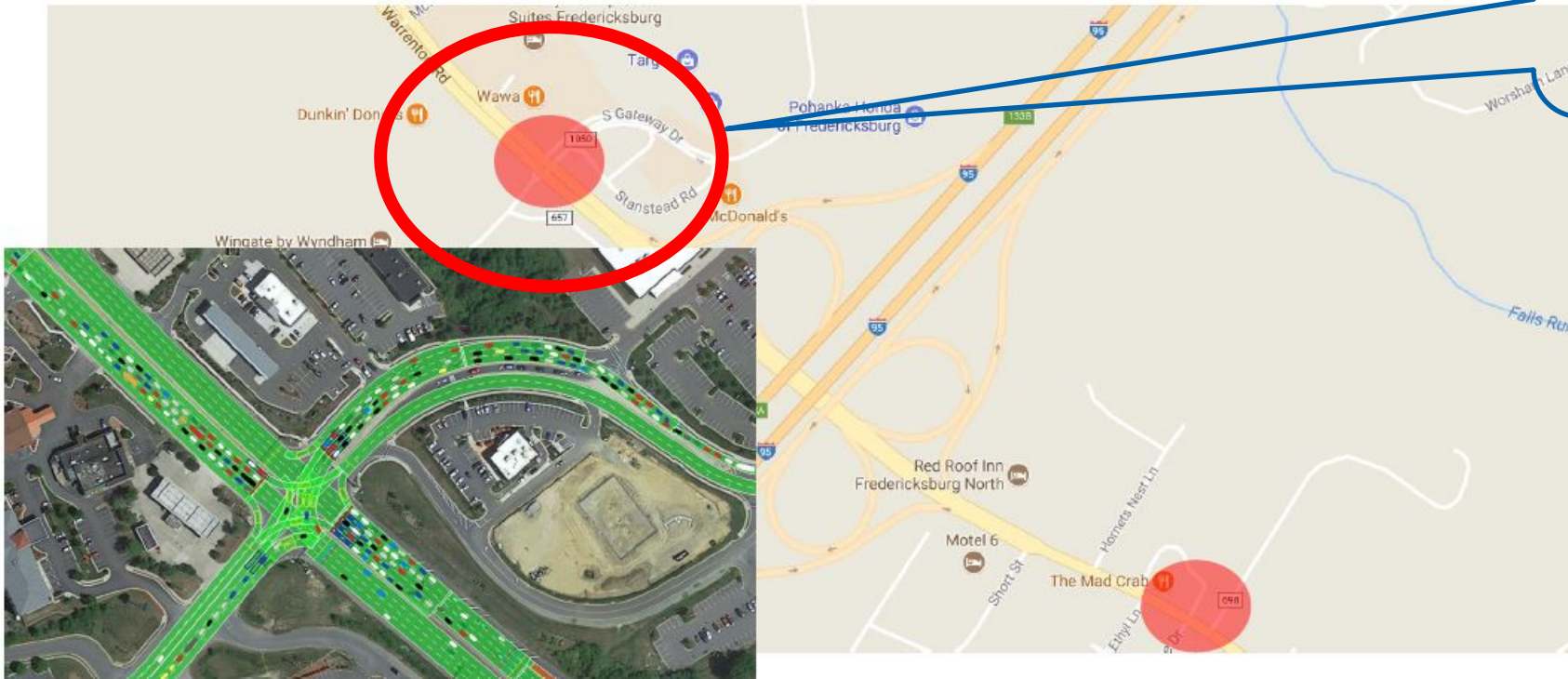
2045 No-Build Scenario results for mainline operations

Weekday PM Peak Period								
Location	I-95 Northbound				I-95 Southbound			
	Distance (miles)	Free Flow Travel Time (min)	Simulation - Experienced Travel Time (min)	Percent Difference	Distance (miles)	Free Flow Travel Time (min)	Simulation - Experienced Travel Time (min)	Percent Difference
Exit 126 - 130	5.7	6	5.7	OK	5.7	6	5.8	OK
Exit 130 - 133	4.2	5	4.4	OK	4.2	5	4.3	OK
Exit 133 - 136	3.8	4	3.8	OK	3.8	4	3.9	OK
Weekday AM Peak Period								
Location	I-95 Northbound				I-95 Southbound			
	Distance (miles)	Free Flow Travel Time (min)	Simulation - Experienced Travel Time (min)	Percent Difference	Distance (miles)	Free Flow Travel Time (min)	Simulation - Experienced Travel Time (min)	Percent Difference
Exit 126 - 130	5.7	6	5.7	OK	5.7	6	5.5	OK
Exit 130 - 133	4.2	5	5.1	2%	4.2	5	4.3	OK
Exit 133 - 136	3.8	4	4.1	2%	3.8	4	3.8	OK
Legend (Travel Time):								
Insignificant Difference compared to Free-Flow Speed								
Percent Difference <10% compared to Free-Flow Speed								
Percent Difference 10% - 25% compared to Free-Flow Speed								
Percent Difference > 25% compared to Free-Flow Speed								

But some significant congestion issues at Ramp intersections with Cross Streets

Exit 133 (Weekday PM Severe Congestion) *(2045 No-Build scenario)*

95 SB to Rte 17 WB
Worst Congestion
So Far!



Submission of Potential Highway Improvements for Consideration in I-95 Phase 2 Study

1. Each Advisory Committee member can submit up to 3 improvements for consideration

- Each GWRC locality
- DRPT
- PRTC
- VDOT
- CTAG
- MWCOG
- FHWA

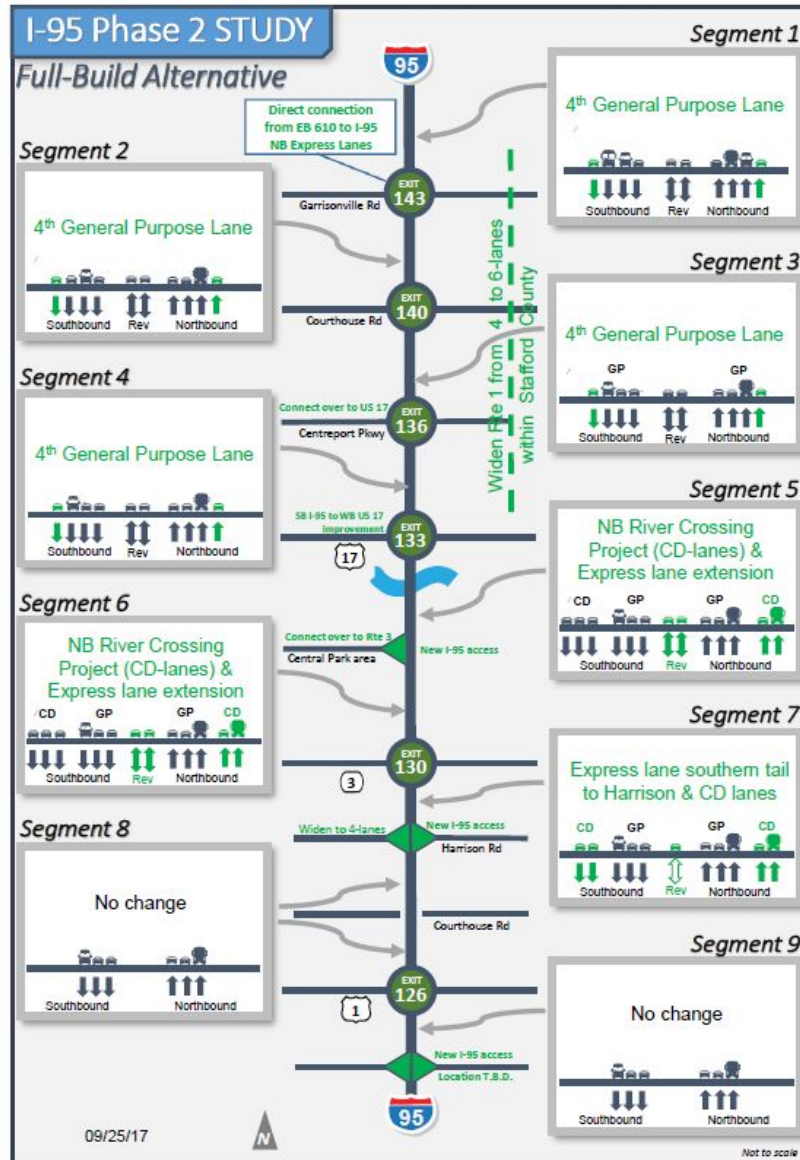
Jurisdiction/Organization	Primary	Alternate
City of Fredericksburg	Erik Nelson	Doug Fawcett
Spotsylvania County	Ed Petrovitch	Doug Morgan
Stafford County	Mike Smith	Chris Rapp
Caroline County	Craig Pennington	Mike Finchum
King George County	Jack Green	
DRPT	Tim Roseboom	Jitender Ramchandani
PRTC	Chuck Steigerwald	Sonali Soneji
VDOT	Stephen Haynes	Linda LaSut
CTAG	Fran Larkins	Rupert Farley
MWCOG	Lyn Erikson	John Swanson
FHWA	Ivan Rucker	

2. Deadline for Submittal: 9/20/2017

- Submit to Paul Agnello: agnello@gwregion.org

Draft Improvements Under Consideration

Draft
Full-Build
Alternative



Green color indicated infrastructure changes to be tested as build alternatives

Other proposed concepts not shown:

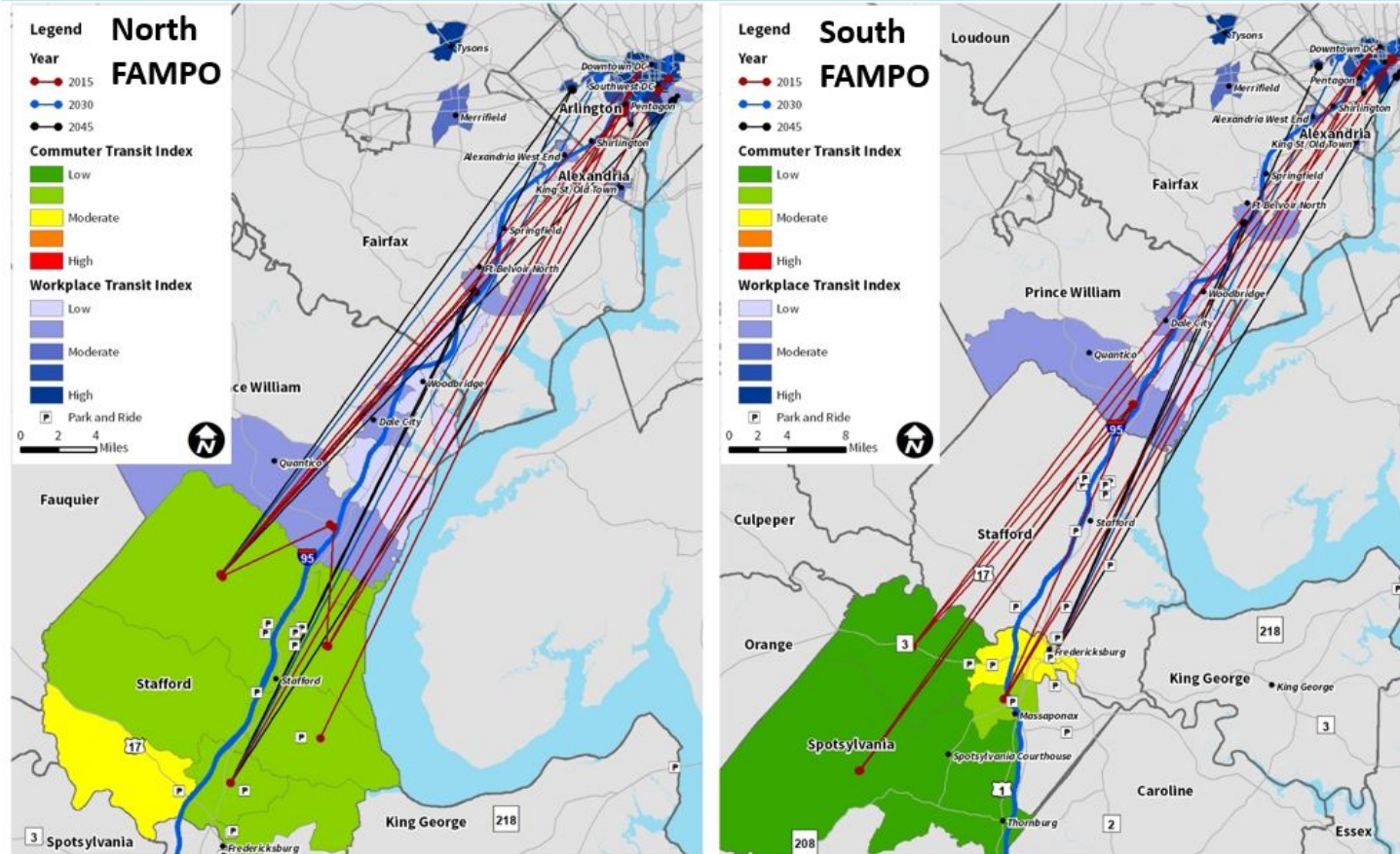
- 1) Improve or construct non-interstate roadways parallel to I-95 to the east or west
- 2) New roadway connecting Stafford Courthouse area to King George toward Dahlgren
- 3) Improvements at Exit 133 to help traffic to / from east
- 4) ITS improvements such as Active Traffic Mgmt Systems (ATMS), Integrated Corridor Mgmt (ICM), ramp metering, variable speed, shoulder lane usage & other innovations.

Meeting Recap

1. Submit comments on September 27th meeting materials to Paul Agnello by October 6th
 - E-mail: agnello@gwregion.org
2. Next Meeting: November 1st – 12:30 to 3 PM with Lunch available at Noon

I-95 Phase 2 Transit/TDM Overview

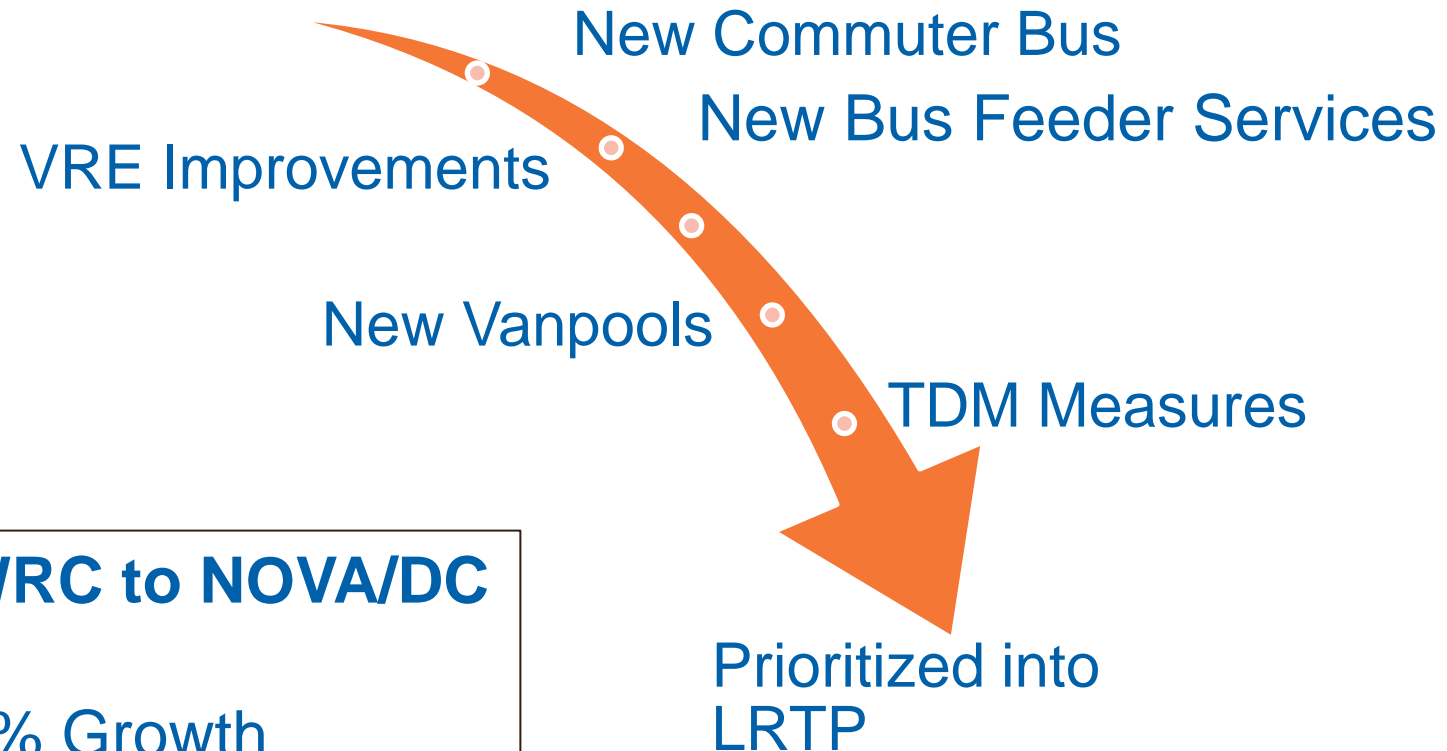
Market Analysis Recap



- Building on results of State OIPI Study
- Using Streetlight Data
- Large increase in commuter trips expected between GWRC/FAMPO and NOVA/DC

I-95 Phase 2: Transit/TDM Summary

About 24K New Commuter Trips Expected by 2045: GWRC to NOVA/DC



Commuter Trips: GWRC to NOVA/DC

2015: 47,800

2030: 58,100 - 22% Growth

2045: 72,000 - 51% Growth

Expected Timeframe for I-95 Phase 2 Draft Results

- **October/November: Transit/TDM**
 - Recommendations will be in time for LRTP and Smart Scale Round 3
- **November to January: Highway**
 - Major recommendations should be in time for this LRTP update
 - Any recommendations not in time for this LRTP update, can be included in planned FY-2019 2045 LRTP Update
 - Recommendations will be in time for Smart Scale Round 3

Upcoming Schedule

1. October:

- Alternatives Development and Analysis for I-95 Phase 2 Highway
- Completion of Transit/TDM and Bike/Ped Analysis

2. November:

- 1st – Next LRTP AC Meeting - #7
- Completion of I-95 Phase 2 Transit/TDM
- Some LRTP Documentation available for review
- Completion of Highway Analysis for LRTP
- Additional Analysis for I-95 Phase 2 Highway

3. December:

- 8th – LRTP Draft Documentation available
- 11th – 13th Tentative timeframe for LRTP AC Meeting - #8
- 18th – Special FAMPO Policy Committee – Approval of some LRTP items
- Additional Analysis for I-95 Phase 2 Highway continuing into January, 2018

Questions & Input?

2045 Long Range Transportation Plan

