

Potential Transportation Legislative Items

June 14, 2017



Potential Transportation Legislative Items for 2018

- 1. Enabling additional rural multilane divided highways to potentially have a speed limit of 60 mph**
- 2. Updating 1986 District Grant Formula for Smart Scale (SS) to be less focused on City/Town population within the District vs. total population**
 - Assuming \$500 Million in Statewide District Grant funding, this could generate an additional \$5 Million per Smart Scale Cycle for Fredericksburg District. Would increase Fredericksburg District grant from about \$35 to \$40 Million.
 - Estimated additional revenue: \$70 Million between 2018 and 2045 (Assuming Bi-Annual SS Cycles)
- 3. Support a Regional Motor Fuels Tax Floor based on Statewide Floor of \$3.17/gallon**
 - Could generate an additional \$5.5 Million per year for FAMPO Jurisdictions
 - Estimated additional revenue: \$158 Million between 2017 and 2045
- 4. Support the ability for adjacent localities, MPO regions, or PDC regions to create Regional Transportation Authorities**

Existing 60 Mph Speed Limit State Code

§ 46.2-870. Maximum speed limits generally.

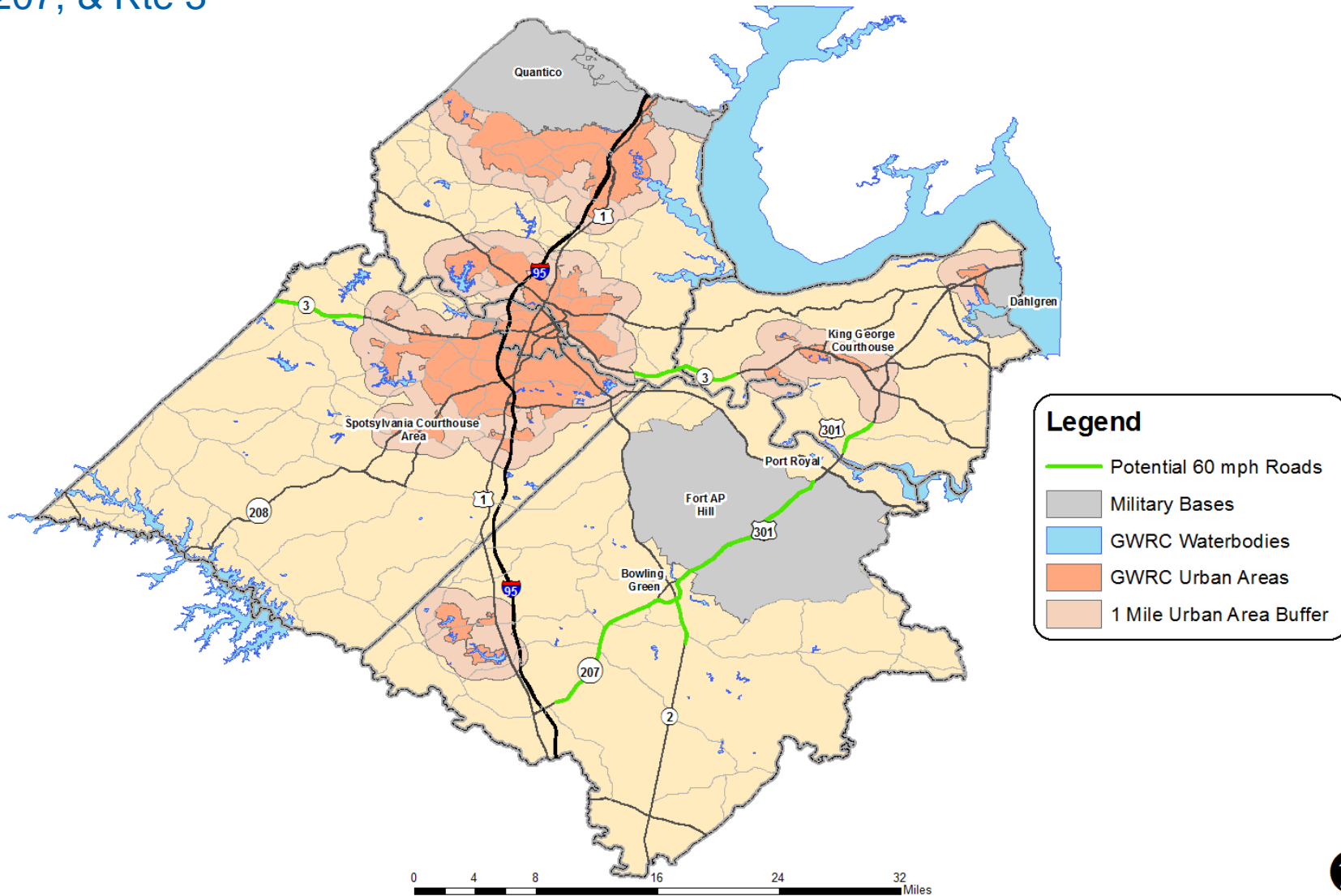
Except as otherwise provided in this article, the maximum speed limit shall be 55 miles per hour on interstate highways or other limited access highways with divided roadways, nonlimited access highways having four or more lanes, and all state primary highways.

The maximum speed limit on all other highways shall be 55 miles per hour if the vehicle is a passenger motor vehicle, bus, pickup or panel truck, or a motorcycle, but 45 miles per hour on such highways if the vehicle is a truck, tractor truck, or combination of vehicles designed to transport property, or is a motor vehicle being used to tow a vehicle designed for self-propulsion, or a house trailer.

Notwithstanding the foregoing provisions of this section, the maximum speed limit shall be 70 miles per hour where indicated by lawfully placed signs, erected subsequent to a traffic engineering study and analysis of available and appropriate accident and law-enforcement data, on: (i) interstate highways, (ii) multilane, divided, limited access highways, and (iii) high-occupancy vehicle lanes if such lanes are physically separated from regular travel lanes. The maximum speed limit shall be 60 miles per hour where indicated by lawfully placed signs, erected subsequent to a traffic engineering study and analysis of available and appropriate accident and law-enforcement data, on **U.S. Route 29, U.S. Route 58, U.S. Route 360, U.S. Route 460, and on U.S. Route 17 between the town of Port Royal and Saluda where they are nonlimited access, multilane, divided highways.**

Map of Potential Eligible Highways for 60 mph Speed Limit

US Rte 301, Rte 207, & Rte 3



Questions?



*Paul Agnello
FAMPO Administrator
(540) 642-1564
Agnello@gwregion.org*