



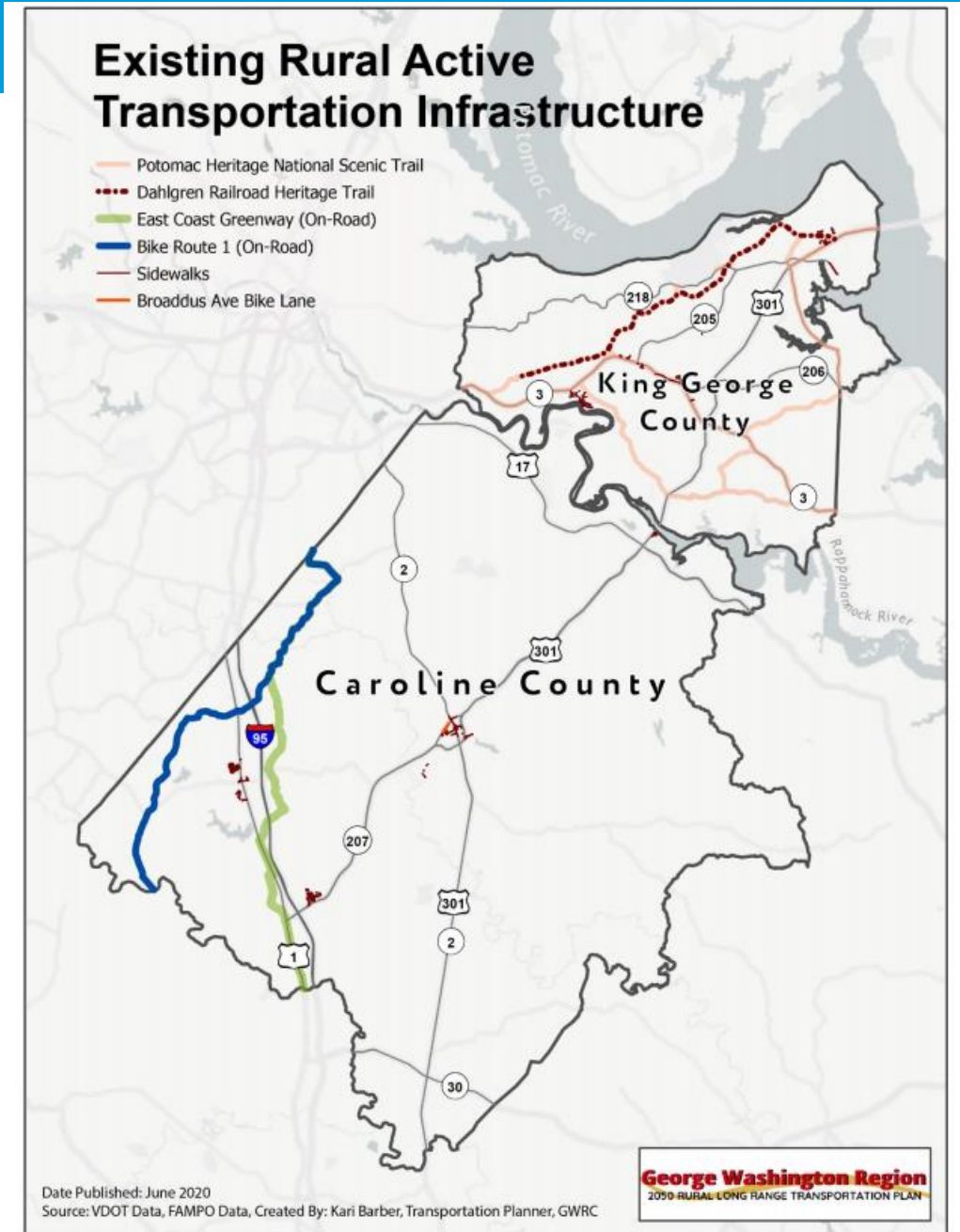
# GWRC 2050 Rural Long Range Transportation Plan

Bicycle and Pedestrian Advisory Committee

August 6, 2020

# Rural Long-Range Transportation Plan

- The 2050 RL RTP is part of the GWRC Rural Work Program for FY 20
- Sixty-page document:
  - Details population and employment profile and projections for the rural region
  - Summarizes existing transportation network
  - Identifies highway and active transportation needs and funding sources



# Rural Active Transportation

- The Rural Long-Range Transportation Plan summarizes existing conditions for active transportation in Caroline and King George Counties
- Makes recommendations for:
  - » Crossing improvements at key intersections
  - » Paved Shared-Use Paths
  - » Roadway reconstruction for safety
  - » Shared Road Signage on low speed/low traffic roadways
  - » Shoulder improvements on rural roads
  - » Expanded sidewalk network

