



2018 FAMPO Trail Usage Report

July 2, 2019

<https://www.fampo.gwregion.org/bicycle-and-pedestrian-committee/>

Eco-Counter™

Eco-Counter is an international company which manages data from bicycle and pedestrian counters stationed worldwide. Eco-counter has implemented these counters to provide the highest degree of accuracy which planners, communities, and other local or state employees can use to determine precisely the number of persons walking or biking on a given location on a daily, monthly, or even yearly basis. The counting system is highly versatile and the counters themselves can track differences in both the number and type of pedestrian. The Eco-counter system also includes data transmission and logging, where the actual counters and count locations can be monitored as need be.

FAMPO Eco-Counter program

The FAMPO eco-counter program is an initiative by FAMPO started in April of 2017 to collect more accurate usage statistics of the major trails and pathways throughout Spotsylvania, Stafford, and the City of Fredericksburg. The trails are primarily used by pedestrian and bike users, so the statistics are solely focusing on the pedestrian side of alternative transportation modes. FAMPO currently has two different counters that are moved throughout the counties to the various trails and shared use paths that adequately represent the bike/ped community in the FAMPO region.

There is a total of 24 count location throughout the FAMPO area; 11 in Fredericksburg, 5 in Spotsylvania, and 7 in Stafford. The locations are as follows:

Fredericksburg

- Cowan Blvd West
- Cowan Blvd @ Hospital Drive
- Fall Hill Ave @ Weston
- Fall Hill Ave @ Hospitality Lane
- Quarry Trails entrance
- Canal Path @ Dog Park
- RRHT @ VOC
- RRHT @ Old Mill Park
- VCR Trail @ Cobblestone

- VCR Trail @ Alum Spring Park
- VCR Trail @ Idlewild

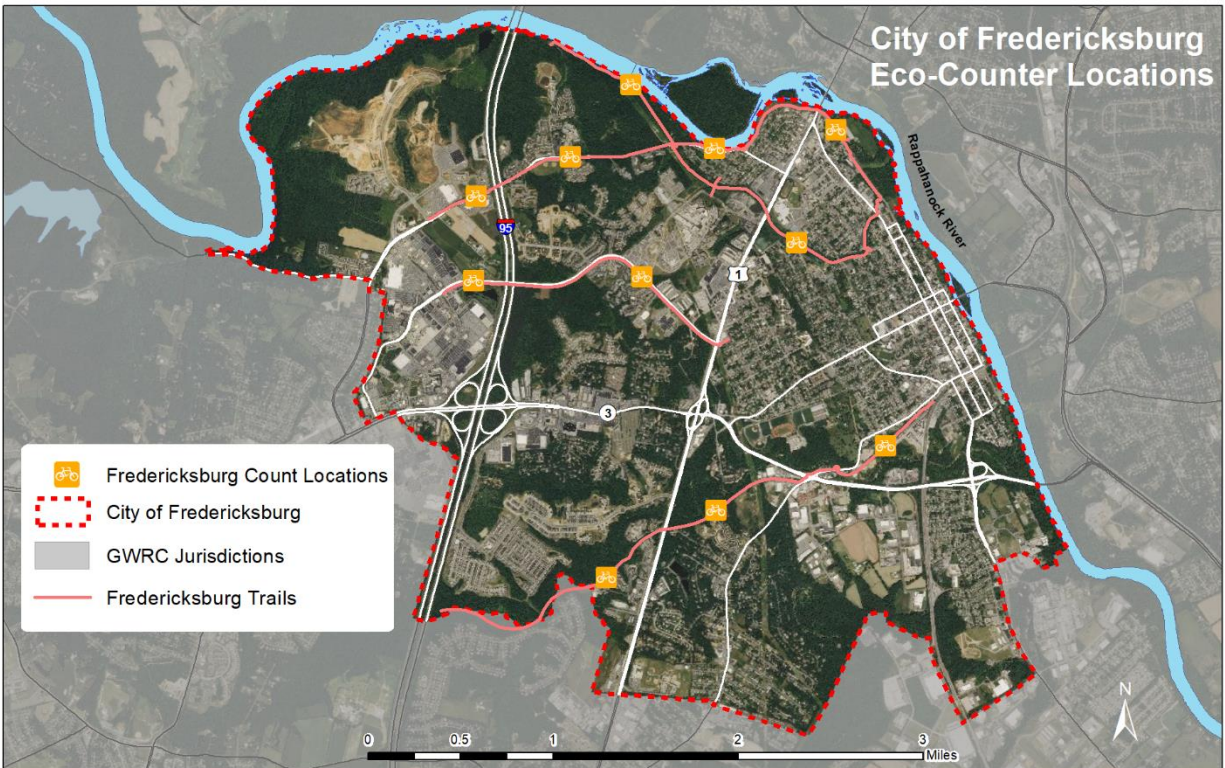
Spotsylvania

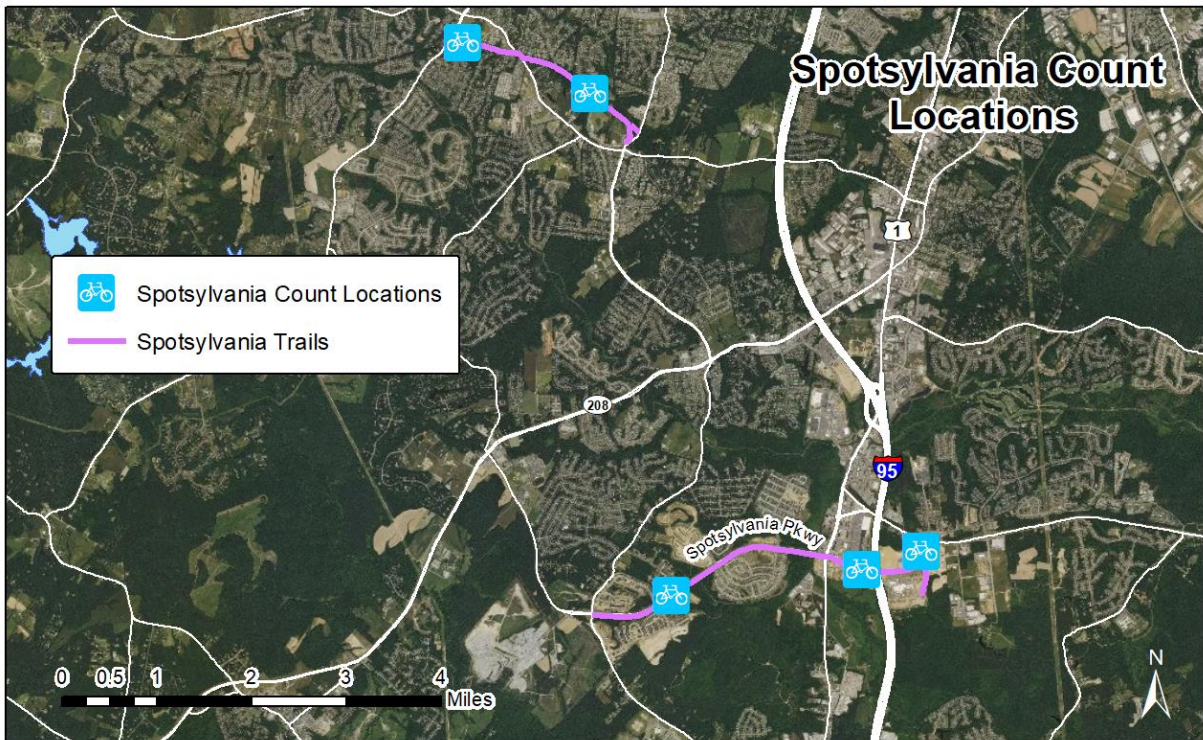
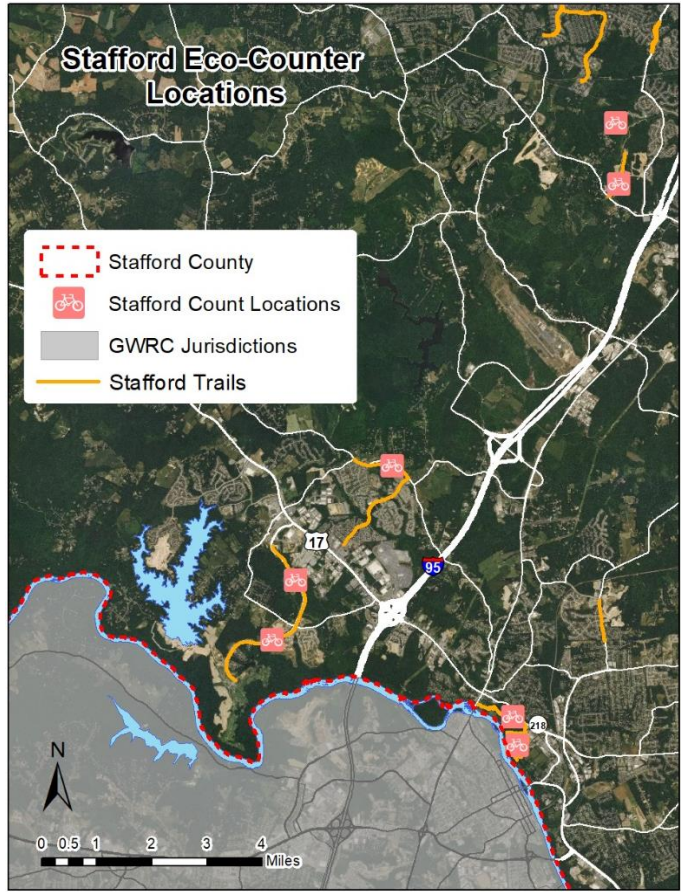
- Hospital Blvd @ Overview Drive
- Spotsylvania Pkwy @ Cosner's Corner
- Spotsylvania Pkwy @ Yellow Birch Drive
- VCR Trail @ Legacy Woods
- VCR Trail @ Hoover Lane

Stafford

- Belmont - Ferry Farm Trail @ Pratt Park
- Belmont - Ferry Farm Trail @ St. Clair Brooks Park
- Celebrate VA Pkwy North
- Celebrate VA Pkwy South
- Truslow Road @ Plantation Drive
- Mine Road @ Embrey Mill Park
- Mine Road @ Embrey Mill Drive

Maps of Eco Counter locations





Usage statistics for 2018

The actual count data for each location represents approximately two or more weeks of count data collected at each location. The raw data for each count location (the number of pedestrian/bike counts), was averaged and yearly data was produced using the [Rails-to-Trails Conservancy](#) trail traffic calculator.

The two counters FAMPO maintains are separate variants of Eco-counters' possible hardware. The Pyrobox; a variant which can only count the number of persons crossing within the counters range using an infrared sensor. The Mobile Multi (MM); can count the same as the Pyrobox, but with the added ability to separately count bike users using sensor tubes attached to the trail itself, which count bikes as they pass over the tubes.

Location	AADT	Annual Traffic Estimate	Annual Traffic	
			Minimum	Maximum
Fredericksburg				
Cowan Blvd West	187.93	68,594	53,504	83,685
Cowan Blvd @ Hospital Drive	607.6	221,774	172,984	270,564
Fall Hill Ave @ Weston	460.22	167,980	142,783	193,177
Fall Hill Ave @ Hospitality Lane	518.51	189,256	153,297	225,215
Quarry Trails entrance	154.6	56,429	34,986	77,872
Canal Path @ Dog Park	398.58	145,482	113,476	177,488
RRHT @ VOC	411.82	150,314	117,245	183,383
RRHT @ Old Mill Park	1,636.95	597,487	483,964	711,009
VCR Trail @ Cobblestone	154.07	56,236	47,800	64,671
VCR Trail @ Alum Spring Park	159.79	58,323	47,242	69,405
VCR Trail @ Idlewild	205.99	75,186	58,645	91,727
Spotsylvania				
Hospital Blvd @ Overview Drive	112.47	41,052	32,020	50,083
Spotsylvania Pkwy @ Cosner's Corner	226.87	82,808	64,590	101,025
Spotsylvania Pkwy @ Yellow Birch Drive	97.31	35,518	27,704	43,332
VCR Trail @ Legacy Woods	90.21	32,927	25,683	40,171
VCR Trail @ Hoover Lane	110.7	40,406	31,516	49,295
Stafford				
Belmont - Ferry Farm Trail @ Pratt Park	20.65	7,537	5,879	9,195
Belmont - Ferry Farm Trail @ St. Clair Brooks Park	131.48	47,990	40,792	55,189
Celebrate VA Pkwy North	29.06	10,607	8,273	12,940
Celebrate VA Pkwy South	45.26	16,250	12,886	20,154
Truslow Road @ Plantation Drive	27.93	10,194	8,258	12,131
Mine Road @ Embrey Mill Park	84.77	30,941	25,062	36,820
Mine Road @ Embrey Mill Drive	53.6	19,564	15,847	23,281

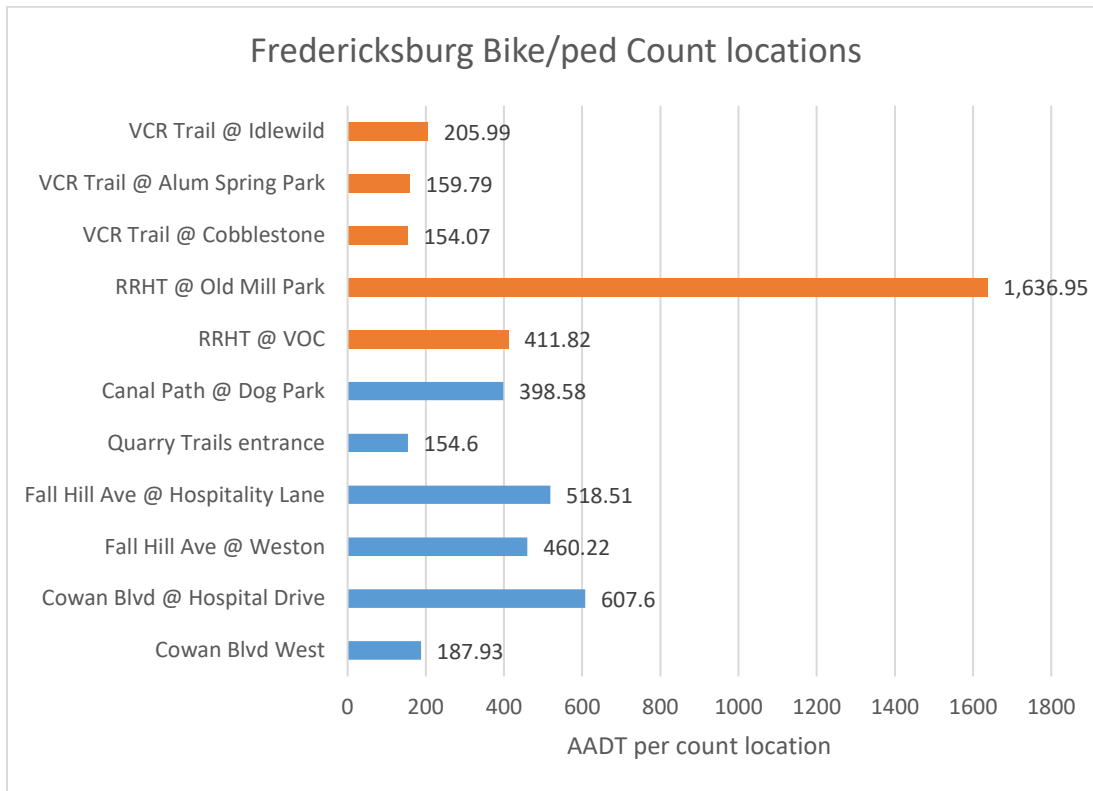


Figure 1: Fredericksburg Count locations summary

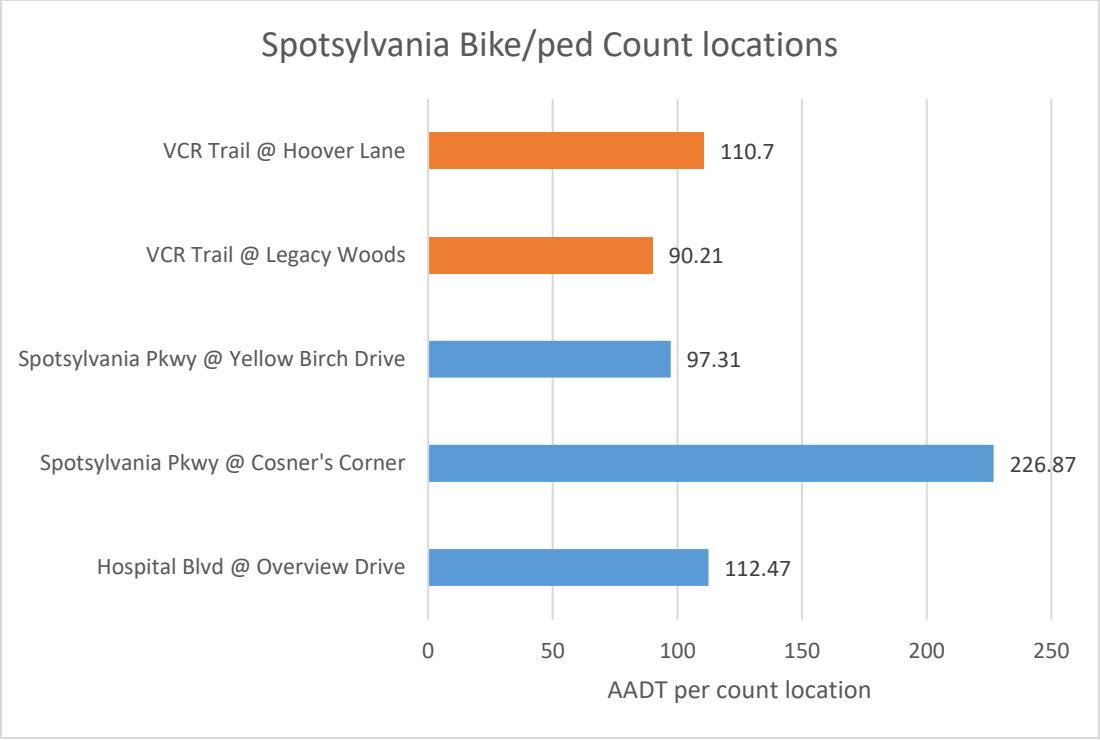


Figure 2: Spotsylvania Count Locations summary

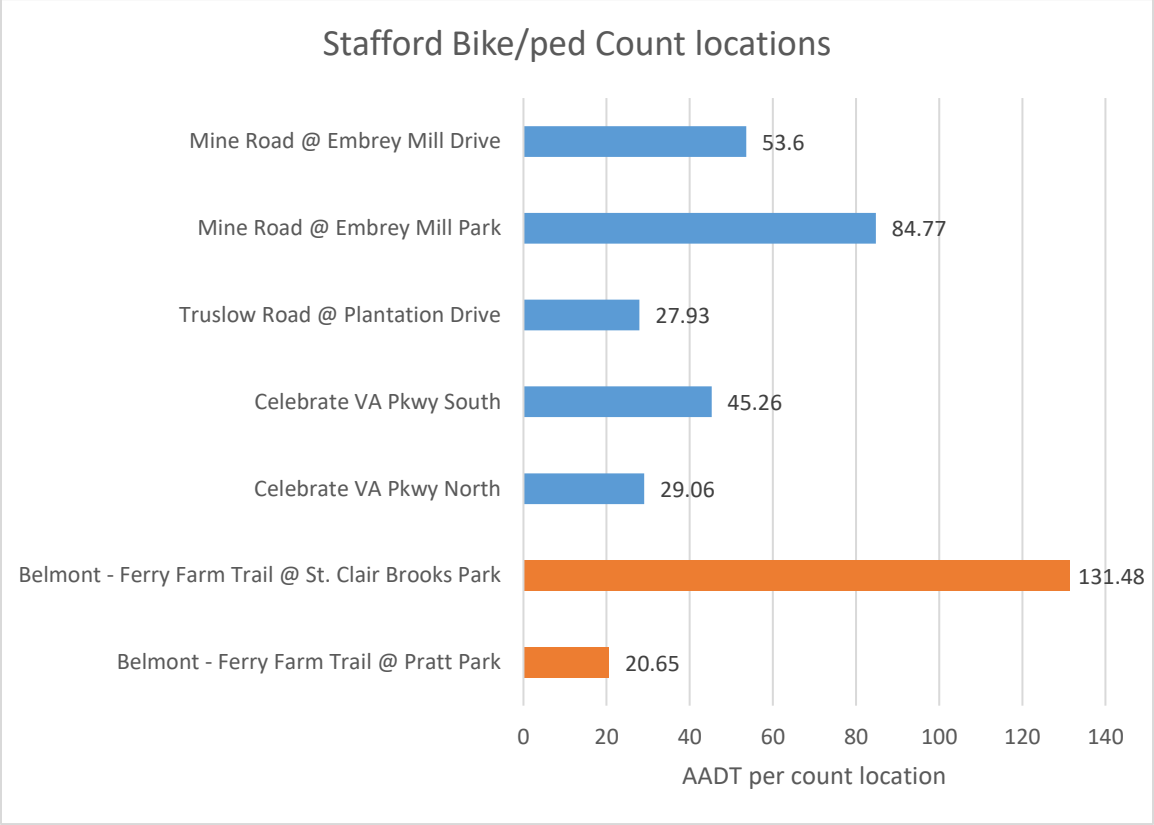


Figure 3: Stafford Count Locations Summary

The usage statistics provided above in figures 1-3 as well as table 1 show the yearly averages as well as estimates for approximately how much traffic each location/trail receives. The Average Annual Daily Traffic (AADT) statistic is the most comprehensive for analyzing the approximate daily number of persons at each trail. The annual traffic estimates in the table above represent the AADT per day for an annual estimated traffic estimates.

Next Steps

The Eco-counter program provides a good context for the overall trail usage and can continue to provide better context for multimodal planning efforts and projects into the future.

The count locations reflect the trails and paths throughout the FAMPO region, but going forward, the count locations could potentially be adjusted if there is consensus on the best locations for the counters to be placed. If there could be potentially public involvement in determining any potential new locations, staff could collect data on the given locations to get more precise usage statistics.