

# GEORGE WASHINGTON REGION TRANSIT POLICY PLAN

## Project Objectives and Overview of Work Plan



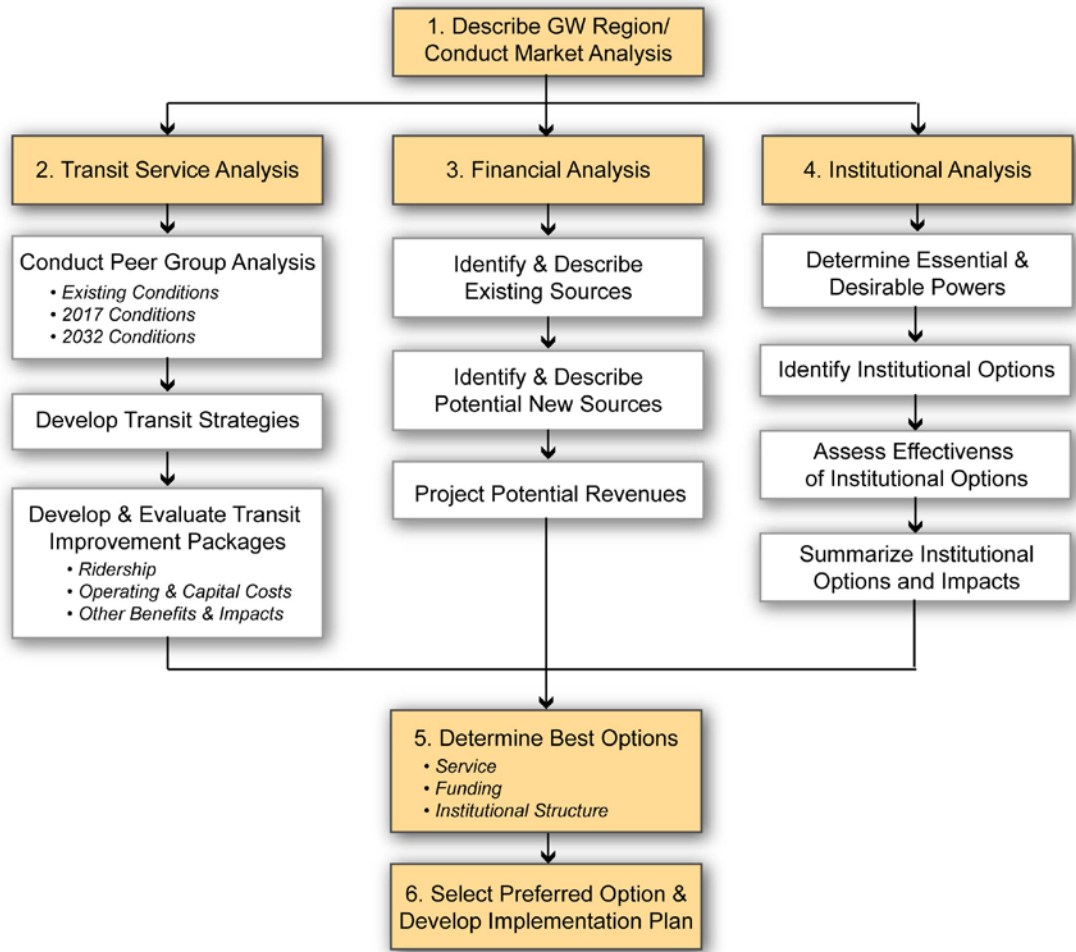
Prepared by **Edwards  
AND Kelcey**

ENGINEERS  
ARCHITECTS  
PLANNERS  
CONSTRUCTORS

February 7, 2007



# Work Program



## Consultant Team



ENGINEERS  
ARCHITECTS  
PLANNERS  
CONSTRUCTORS



## Consensus Building

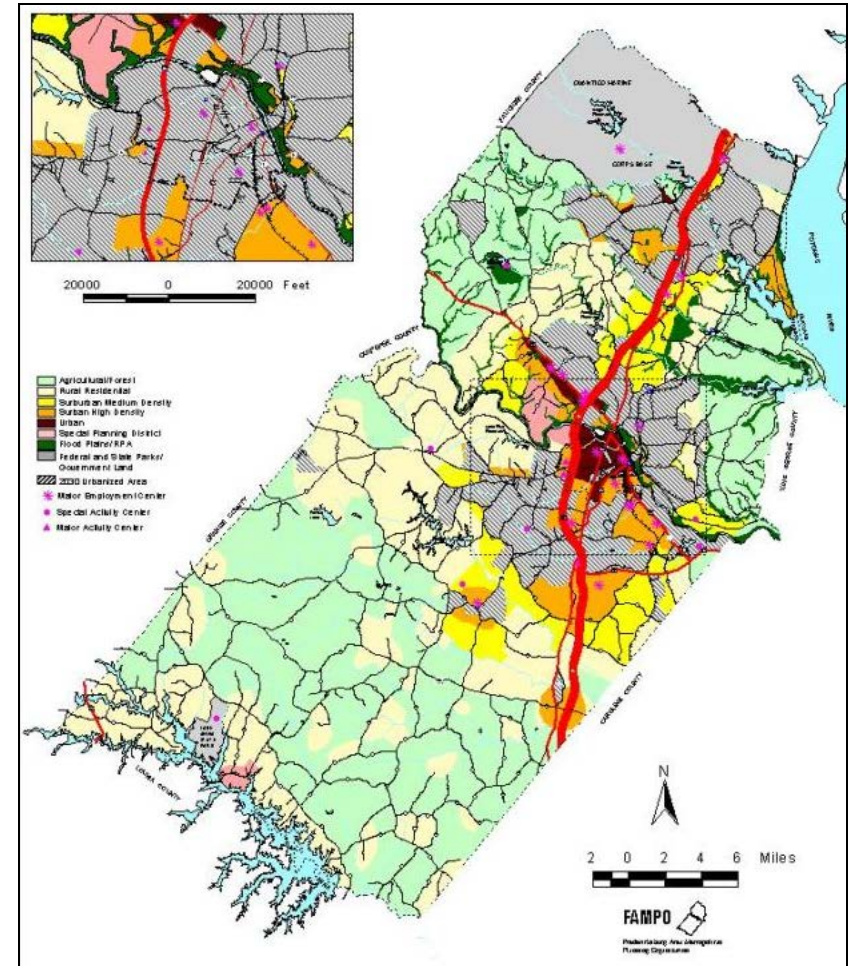


# Project Objectives

- Develop regional consensus on improved transit services.
- Develop a set of mechanisms to fund desired services.
- Determine the most appropriate transit governing/operating entity.

# 1. Market Analysis

- Identify local interests
- Conduct interviews with major stakeholders.
- Document existing conditions.
- Determine projected future conditions.



## 2. Transit Service Analysis

- Conduct peer review.
- Develop potential transit strategies:
  - Coordinated Human Service Transportation Plan
  - Mid-Term (2015)
  - Long-Term (2035)
- Evaluate transit strategies.
- Develop service plans.
- Develop consensus.

### Potential Transit Improvements

- Hub and spoke system with a primary hub in downtown Fredericksburg and secondary hubs in surrounding areas.
- Bus priority measures to make service faster.
- High frequency bus corridors to improve service frequency.
- Route simplification to make service more direct and to minimize variations.
- New express services.
- New Rapid Bus service.
- Future Bus Rapid Transit.
- Flex-services in lower density areas to provide connections to fixed-route services.
- New routes to suburban manufacturing sites.
- Integration of general public, paratransit, and human service transit.
- Park and ride expansion.
- Improved connections to commuter rail.
- Expanded joint pass arrangements.
- Improved transit information.

## 3. Funding Analysis

- Identify and describe existing funding sources.
- Identify and describe potential new funding sources.
- Project future revenues.
- Develop consensus.

### Potential New Funding Sources

- Local gas tax (per gallon or percent of sales)
- Parking tax
- Payroll tax
- General sales tax
- Transportation sales tax
- Hotel tax (transient occupancy tax)
- Road pricing/congestion fees
- HOT lane tolls
- Vehicle registration tax
- Special transportation, benefits assessment and taxation districts
- Joint development
- Public/private partnerships
- Development impact fees including transit fees
- Conversion of vanpool and private commuter bus to FTA 5307 revenue generators
- Fares, tolls and other fees

## 4. Institutional Analysis

- Determine desirable characteristics of responsible entity.
- Identify options:
  - New GW Region Transportation District
  - Expansion of FRED
  - Expansion of PRTC
  - Other...
- Assess effectiveness.
- Determine impacts on other agencies.
- Develop consensus.

## 5. Implementation Plan

- Develop consensus:
  - Proposed services.
  - Financing.
  - Transportation entity.
- Develop implementation plan:
  - Actions required to create new transportation entity.
  - Actions required to transfer assets.
  - Actions required to implement new financing.
  - Schedule of key dates
  - Responsibilities of key parties.