

GEORGE WASHINGTON REGION TRANSIT POLICY PLAN

Spotsylvania FRED Transit Service Overview



Prepared by



July 10, 2007

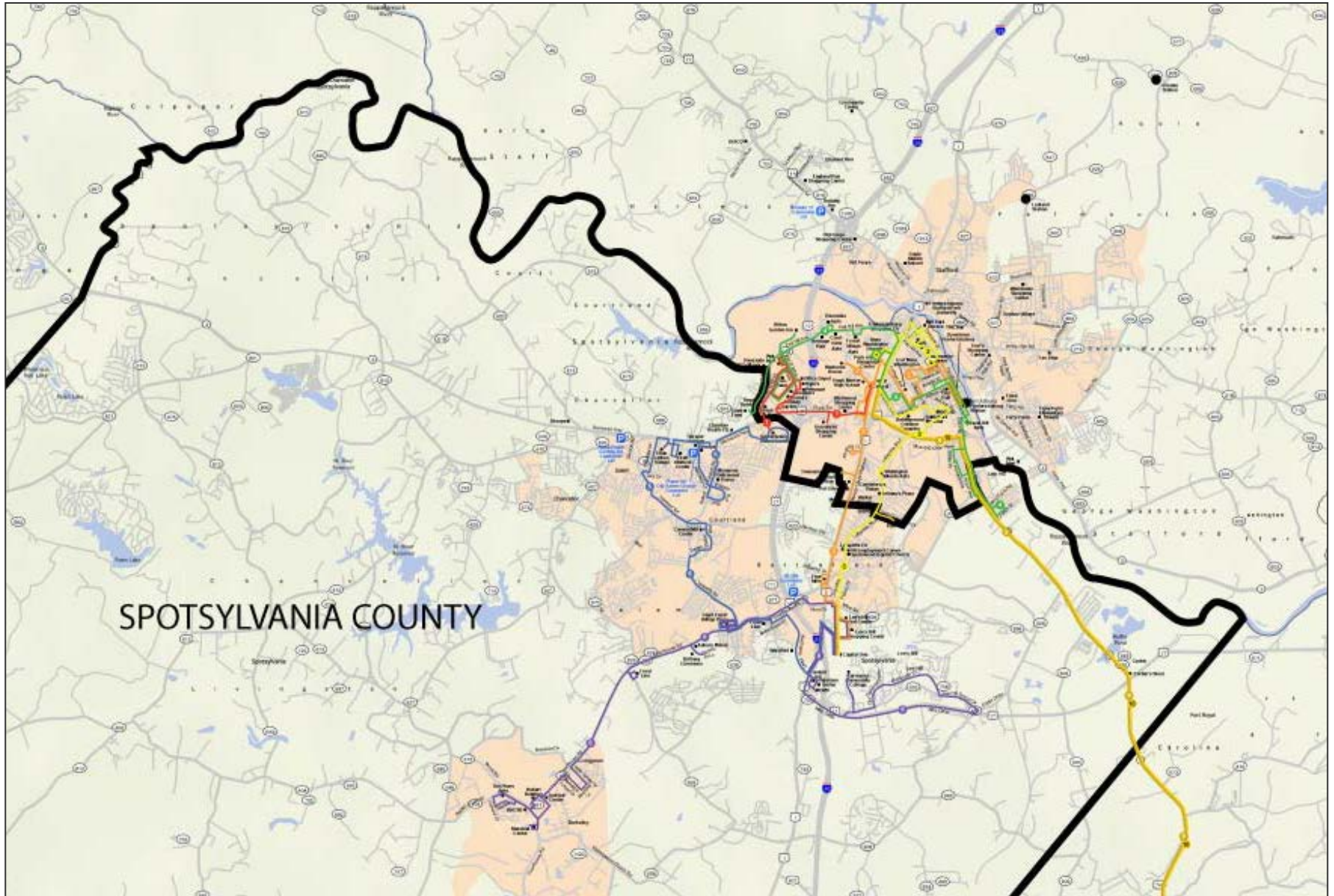
FRED operates eight routes in Spotsylvania County:

- 1 Spotsylvania Towne Centre - Fredericksburg
- 2 Massaponax - Fredericksburg via Jefferson Davis Highway
- 3 Massaponax - Fredericksburg via Lafayette Blvd
- 4 Sylvania Heights - Fredericksburg - Central Park
- 5 Massaponax - Spotsylvania Towne Centre
- 6 Spotsylvania Courthouse - Massaponax
- 9 Bowling Green/Ladysmith/Carmel Church - Fredericksburg
- 10 Bowling Green/Dawn/Port Royal - Fredericksburg

Spotsylvania County pays for the operation of two of these routes (Routes 5 and 6).

Fredericksburg and Caroline County pay the cost for the others.

**GEORGE WASHINGTON REGION
TRANSIT POLICY PLAN**



In 2006, FRED transported approximately 84,200 riders in Spotsylvania County.

FRED ROUTE	Total Ridership	Ridership in Spotsylvania (estimated)	Percent
1 Spotsylvania Towne Centre - Fredericksburg	53,300	13,300	25%
2 Massaponax - Fredericksburg via Jefferson Davis Highway	31,700	7,500	24%
3 Massaponax - Fredericksburg via Lafayette Blvd	39,600	8,900	23%
4 Sylvania Heights - Fredericksburg - Central Park	60,000	10,800	18%
5 Massaponax - Spotsylvania Towne Centre	25,400	25,400	100%
6 Spotsylvania Courthouse - Massaponax	17,300	17,300	100%
9 Bowling Green/Ladysmith/Carmel Church - Fredericksburg	5,200	900	18%
10 Bowling Green/Dawn/Port Royal - Fredericksburg	900	100	10%
Total	233,400	84,200	36%

Operating costs for service in Spotsylvania County are about \$405,800. The county contributes about \$265,500.

FRED ROUTE	Spotsylvania Cost	Spotsylvania Contribution	Percent
1 Spotsylvania Towne Centre - Fredericksburg	\$13,100	\$0	0%
2 Massaponax - Fredericksburg via Jefferson Davis Highway	\$32,700	\$0	0%
3 Massaponax - Fredericksburg via Lafayette Blvd	\$31,000	\$0	0%
4 Sylvania Heights - Fredericksburg - Central Park	\$24,700	\$0	0%
5 Massaponax - Spotsylvania Towne Centre	\$132,800	\$132,800	100%
6 Spotsylvania Courthouse - Massaponax	\$132,800	\$132,800	100%
9 Bowling Green/Ladysmith/Carmel Church - Fredericksburg	\$24,400	\$0	0%
10 Bowling Green/Dawn/Port Royal - Fredericksburg	\$13,800	\$0	0%
Total	\$405,800	\$265,600	65%

FRED's average cost per rider in Spotsylvania is \$4.81. The county contributes \$3.36.

FRED ROUTE	Total Cost per Rider	Spotsylvania Contribution
1 Spotsylvania Towne Centre - Fredericksburg	\$0.98	\$0
2 Massaponax - Fredericksburg via Jefferson Davis Highway	\$4.34	\$0
3 Massaponax - Fredericksburg via Lafayette Blvd	\$3.47	\$0
4 Sylvania Heights - Fredericksburg - Central Park	\$2.29	\$0
5 Massaponax - Spotsylvania Towne Centre	\$5.23	\$5.22
6 Spotsylvania Courthouse - Massaponax	\$7.67	\$7.67
9 Bowling Green/Ladysmith/Carmel Church - Fredericksburg	\$2.29	\$0
10 Bowling Green/Dawn/Port Royal - Fredericksburg	\$152.44	\$0
Average	\$4.81	\$3.36

TCRP's 2006 report on suburban transit indicates that subsidies per passenger typically range from \$4.50 to \$11.30.

Summary

Service

- FRED operates eight routes which serve Spotsylvania County.
 - Two operate entirely within the county.
 - Six provide connections to neighboring areas.
- 84,200 passengers per year ride service within, to, or from Spotsylvania County.

Operating Costs

- Spotsylvania County pays the operating costs for the two routes that operate entirely within the county, nothing for the others.
- Spotsylvania County services cost \$405,300 per year to operate.
- The county contributes \$265,500.
- The City of Fredericksburg and Caroline County pay the other \$139,800.

Summary (cont.)

Operating Cost per Passenger

- FRED's operating cost per Spotsylvania rider trip is about \$4.80.
- Of this amount, Spotsylvania County pays about \$3.35 per rider trip.
- According to a 2006 report by the Transportation Research Board, suburban transit subsidies in the United States typically average between \$4.50 and \$11.30 per rider trip, with a mid-range cost of about \$7.00 per rider trip.